

illinois

Volume 53, Number 3 | May/June 2022

# P&R

## PARKS AND RECREATION

The magazine of the Illinois Association of Park Districts and the Illinois Park and Recreation Association



aquatics

A photograph of four children climbing a rope structure on a playground. The structure is made of black metal frames and thick black ropes. The children are wearing orange shirts and purple shorts. The background is a clear blue sky and green trees. The image is partially obscured by a white circular graphic on the right side.

# THE CORE OF PLAY

What is the Core of play? The hub of excitement? The center of energy? The crux of Play That Moves You? It's Nucleus Core – the climbing, adventurous and fun epicenter of your new playspace. It's the Core of play only from Burke.

Join Our Movement at [playil.com](http://playil.com)

**PLAY**  
ILLINOIS

Exclusive Representative of

**Burke**  
PLAY THAT MOVES YOU.

# IN THIS ISSUE



12



20



28

- 4 **From the Editor**  
Summer Has Arrived!
- 6 **Get on Board**  
Dive Into the Great Things That Are Taking Place at IAPD
- 8 **Eye on the Profession**  
The Great Opportunity
- 10 **Statehouse Insider**  
IAPD Enjoys Another Highly Successful Spring Session
- 12 **Creating A Work Class Aquatics Facility**
- 20 **Meeting the Aquatic Needs of an Entire Community**
- 28 **The Leadership in Unprecedented Times**
- 34 **People and Places**  
Updates and tributes in the park, recreation and conservation family
- 37 **Corporate and Commercial Members**

# FROM THE EDITOR

## Summer has arrived!

Where has 2022 gone? It feels like it is flying by! Luckily, we are headed into summer and I'm so excited to get outside and have fun at pools, splashpads and waterparks.



As the father of two, summer marks the start of watery fun and one of my favorite things is to go to a local pool and swim for hours on end. I love how park districts, forest preserves, conservation, recreation, and special recreation agencies provide so many different opportunities for families to fully enjoy the warmer parts of the year.

I've found so much joy in giving my family different experiences through the summer. Whether it's going boating, swimming, playing at parks, walking along trails, it's your agencies that provide the endless supply of memory making moments we all enjoy.

What I love seeing is the innovations your agencies bring to aquatics. New equipment and facilities can transform an entire community and provide a vital benefit to residents. Not only are the health benefits great, but these locations offer so many job opportunities for young people. I can't tell you the number of times I've heard about some of our long-standing executive directors or commissioners starting their experience with a park district as a lifeguard. Every year, we are guiding more and more new faces into the world of parks and recreation.

This issue is focused on aquatics, with stories from two of our park districts. On page 12, Waukegan Park District explores how the decision to replace an outdoor pool led to an incredible transformation in "Creating a World Class Aquatics Facility." In "Meeting the Aquatic Needs of An Entire Community" on page 20, Bensenville Park District examines how providing accessibility can drastically improve the quality of life in the world of aquatics. Finally, we have an article from Ian Hill, "The Leadership in Unprecedented Times" on page 28 that looks at what a leader must possess to guide their team to success.

Don't let this summer pass by quickly without making sure you get outside and have a great time!

— Wayne Utterback, Editor

Cover image: Cassidy Reinhard, Vernon Hills Park District



211 East Monroe Street, Springfield, Illinois 62701-1186 217.523.4554 FAX 217.523.4273 iapd@ilparks.org www.ilparks.org www.Ilipra.org

**Managing Editor**  
PETER M. MURPHY, President and Chief Executive Officer, IAPD

**Editor**  
WAYNE UTTERBACK, IAPD

**Graphic Design**  
GOSS ADVERTISING, 217.423.4739, www.gossadvertising.com

**Advertising Sales Representative**  
TODD PERNSTEINER, 952.841.1111, info@pernsterner.com

## JOINT EDITORIAL COMMITTEE

**IAPD Representatives**  
GARY GILLIS, Co-Chair, Pekin Park District  
LORI FLORES-WEISSKOPF, Park District of Highland Park

**IPRA Representatives**  
KARI FELKAMP, CPRP, IPRA Co-Chair, Elmhurst Park District  
CHERYL BUHMANN, Vernon Hills Park District  
JOAN SCOVIC, CPRP, Northbrook Park District

## ILLINOIS ASSOCIATION OF PARK DISTRICTS

LORI PALMER, Chairman, Bartlett Park District  
JEFF RIGONI, Chairman-Elect, Lockport Township Park District  
MIKE VOGL, Immediate Past-Chairman, Bloomingdale Park District  
BILL CASEY, Vice Chairman, Glenview Park District  
GARY GILLIS, Vice Chairman, Pekin Park District  
TED SCHULZ, Vice Chairman, New Lenox Community Park District  
C.J. METCALF, Treasurer, Springfield Park District  
ROBERT SCHMIDT, Sergeant-At-Arms, Schaumburg Park District  
MARTESHA BROWN, Rockford Park District

CHRIS CALDWELL, Channahon Park District  
MARY ANN CHAMBERS, Northbrook Park District  
ROBERT JOHNSON, Sr., Peoria Park District  
ROBERT KAPLAN, Hoffman Estates Park District  
BERNIE O'BOYLE, Tinley Park Park District  
JESSE ORTEGA, Mundelein Park & Recreation District  
MIKE REID, Skokie Park District  
JOSEPH SCHMITT, Alsip Park District  
DR. KRISTIN WHITE, Decatur Park District

## IAPD HEADQUARTERS

211 East Monroe Street, Springfield, IL 62701-1186 217.523.4554 www.ilparks.org

PETER M. MURPHY, President and Chief Executive Officer  
JASON ANSELMANT, General Counsel  
KARI CATTON, Executive Secretary  
BOBBIE JO HILL, Director of Public Relations & Membership Engagement

ALAN HOWARD, Director of Finance & Human Resources  
SHANNON SARTAIN, Legal/Legislative Secretary  
SUE TRIPHANN, Director of Education & Conferences  
WAYNE UTTERBACK, Director of Communications & Digital Content

## ILLINOIS PARK AND RECREATION ASSOCIATION

**CHAIR**  
TRISHA BREITLOW, CPRP, CTRS, Executive Director, Maine-Niles Association of Special Recreation

**CHAIR-ELECT**  
LISA SHEPPARD, CPRP, Executive Director, Glencoe Park District

**PAST CHAIR**  
DOUG G. DAMERY, CPRP, Director of Parks & Recreation, Normal Parks & Recreation Department

**NORTHWEST REGION REPRESENTATIVE**  
ANDREW THURMAN, CPRP, Executive Director, Geneseo Park District

**SOUTHERN REGION REPRESENTATIVE**  
ANDREW DALLNER, CPRP, Director of Parks and Recreation, O'Fallon Parks and Recreation

**CENTRAL REGION REPRESENTATIVE**  
DEREK HARMS, CPRP, Executive Director, Springfield Park District

**CHICAGO METRO REGION REPRESENTATIVE**  
MATTHEW FAIRBANKS, CPRP, Director of Parks & Recreation, Palos Heights Parks & Recreation

**MEMBERSHIP COUNCIL REPRESENTATIVE**  
ERIKA STROJINC, CPRP, Director of Recreation & Facilities, Buffalo Grove Park District

**AT LARGE REPRESENTATIVE**  
KEITH WALLACE, CPRP, Executive Director, Lincolnway SRA

## IPRA HEADQUARTERS

536 East Avenue, LaGrange, IL 60525-6815 708.588.2280 www.Ilipra.org

BARBARA ARANGO, CAE, Executive Director  
BARRY FRANKS, Finance Director  
CINDY GALVAN, CMP, Conference & Meetings Manager

KIM LAPER, CPRP, Education & Events Manager  
DUANE SMITH, CPRP, Education Director  
HEATHER WEISHAAR, Communications & Marketing Director

Illinois Parks and Recreation (ISSN 0019-2155) is published bimonthly at 211 E. Monroe Street, Springfield, Illinois, by the Illinois Association of Park Districts and the Illinois Park and Recreation Association. Annual subscription rates: \$12 for IAPD/IPRA members; \$50 for non-members; \$60 foreign; \$20 educational institutions. Single copies: \$2 members; \$10 nonmembers. Periodicals postage paid at Springfield, Illinois and additional post offices. POSTMASTER: Send address changes to Illinois Parks & Recreation, 211 E. Monroe Street, Springfield, IL 62701-1186. Opinions expressed in this publication are those of the authors and do not necessarily express the official views of the IAPD/IPRA. Likewise, the publication of any advertisement is not to be construed as an endorsement of the product or services offered. Members of the IAPD and the IPRA and other interested persons are encouraged to submit articles and illustrative photos for possible publication in the magazine. Send for manuscript guidelines and deadline dates: Editor, Illinois Parks & Recreation, 211 E. Monroe Street, Springfield, IL 62701-1186, 217.523.4554, iapd@ilparks.org, www.ilparks.org. By submitting articles for publication, authors are assigning the copyright to the Illinois Association of Park Districts.

Copyright © by the Illinois Association of Park Districts and the Illinois Park and Recreation Association. All rights reserved. Reprints of articles in whole or in part without prior written permission are prohibited.



Photo Courtesy of: Metro East Park & Recreation District

## IPARKS PARTNERSHIPS EMPOWER YOU TO PROTECT YOUR DISTRICT, ASSETS AND THOSE YOU SERVE

We provide services, solutions, ideas and advice to protect your district, so you can feel confident in providing a safe place for your community.



Owned, operated and governed in collaboration with fellow members




Working with members who have adopted the proactive risk management culture of our membership



Members have a dedicated Risk Control Specialist, Member Services Partner and Member Representatives working as an extension of their team

Let us know how we can help by contacting an IPARKS representative at 800.748.0554



IPARKS IS THE RISK MANAGEMENT AFFINITY PARTNER OF THE IAPD



Peter M. Murphy, Esq., CAE, IOM  
IAPD President and CEO

## Dive Into the Great Things that are Taking Place at the IAPD

American anthropologist Loren Eiseley said, "If there is magic on this planet, it is contained in water." As I read through this aquatics issue of *Illinois Parks & Recreation* magazine, I believe that statement is true.

We all know that water is magic to the health and well-being of the human body. We can survive several weeks without food, but we can only survive days without water. Water also provides a platform for one of those magical non-impact forms of exercise, which can be critical for physical therapy and cardiac fitness. Finally, the tranquil quality of water has been proven to reduce stress, anxiety, and depression.

We are so very fortunate to be leaders in an industry that provides a diverse array of opportunities for people to enjoy the magic of water-related recreation.

The Illinois Association of Park Districts' member agencies operate more than 2,000 water-related recreational areas including indoor and outdoor swimming pools, water parks, boating and fishing areas, beaches, and splash pads. Thousands of Illinois residents will be keeping cool this summer thanks to your hard work and dedication to keep things running behind the scenes.

As always, IAPD has been working diligently to provide you with the tools that you need to keep things at your agencies afloat, not just in terms of aquatics, but in everything that you do.

We continue to share messages about the importance of park districts, forest preserves, conservation, recreation, and special recreation agencies with members of the Illinois General Assembly.

Last month, we created an exciting new twist on our *Parks Day at the Capitol* by creating a virtual *Parks Day at the Capitol Spring Showcase*, featuring videos from member agencies highlighting their parks, programs, and facilities. IAPD invited legislators to dive into this *Parks Day* site and

take a virtual walk through some of the best local parks, forest preserves, and conservation areas in the country.

Thank you to all of our member agencies that participated in this outstanding project. Your incredible videos exceeded our expectations and provided legislators with an excellent view of the positive impact that we have on communities and citizens statewide.

Our *Leadership Institute* has been making a big splash among commissioners and professionals who want to enhance their personal growth and professional development. Presenter Ian Hill is sharing his wealth of knowledge acquired from running a multi-million-dollar business operation and spearheading life-changing community projects.

"Individually, we are one drop. Together, we are an ocean."

– Ryunosuke Satoro



The first three sessions of this power-packed program are available to IAPD members on-demand, and the final session will be a virtual presentation on July 14, so visit our website to benefit from this incredible educational series.

IAPD's *Summer Golf Tour* promises to submerge attendees in knowledge about golf operations and provide abundant opportunities to connect with colleagues, friends, and businesses that provide goods and services for your agency. It is true that some of the best meetings take place on the golf course, so please consider attending at least one of these great outings.

Saturday, August 20 is our 28<sup>th</sup> annual *Park District Conservation Day* at the Illinois State Fair. This is one of the largest public awareness events in the state for promoting park districts, forest preserves, conservation, recreation, and special recreation agencies. It is a wonderful opportunity for program participants from member agencies to show off their dance, gymnastics, tumbling, theater, and music skills to thousands of fairgoers.

We also encourage commissioners, professionals, and staff to participate in this exciting day by serving as volunteers. Performers and volunteers receive complimentary parking and admission to the Illinois State Fair along with a commemorative *Park District Conservation Day* t-shirt. Discounted hotel rooms are available, so be sure to add Springfield to your list of summer destinations!

IAPD's *Best of the Best Awards Gala*, our most inspiring event of the year, is coming to Wheeling Park District's beautiful Chevy Chase Country Club the evening of Friday, October 14.

Board member and agency anniversaries are recognized during this motivational evening along with outstanding partnerships, intergovernmental agreements, relationships with businesses, citizen volunteers, and other endeavors that create cost-saving benefits for park, recreation, and conservation agencies and the citizens of Illinois.

Please give some thought to submitting nominations for one or more of these great awards. Award-winning agencies receive valuable recognition from their local media, which instills an enormous sense of community pride.

As you can see, IAPD has waves of great programs and events coming your way, each of which is designed to provide you with opportunities to stay connected with colleagues in the field, learn timely leadership techniques, hone your professional skills, and celebrate the collective pride we have in staying among the nation's best provider of parks, recreation, and conservation.

Thank you for your commitment to stay connected with IAPD. Your involvement creates an amazing ripple effect of success and demonstrates that magic is not only found in water, but in the hearts of each of you who exude the spirit of parks and recreation.

## 2022 CALENDAR OF EVENTS

### EVENTS & EDUCATION

Aug. 20



**Park District Conservation Day**  
State Fairgrounds  
Springfield, IL

Oct. 14



**Best of the Best Awards Gala**  
Chevy Chase Country Club  
Wheeling Park District

Sept 20-22

**NRPA Congress & Exposition**  
Phoenix, AZ

Nov. 3



**Legal Symposium**  
Hyatt Lodge/  
Conference Center  
Oak Brook, IL

Jan. 26-28



**IAPD/IPRA Soaring to New Heights Conference**  
Hyatt Regency,

The  
**IAPD Leadership**  
Institute

Thursday, July 14, 2022  
**Webinar #3:**  
6:30 p.m. - 8:00 p.m.



By Barbara Arango, CAE  
IPRA Executive Director

## The Great Opportunity

We're all feeling it – the Great Resignation has hit us hard over the past couple of years. And now we're dealing with the Great Reshuffle. Workforce issues are universal these days. Between the lingering effects of COVID, the questioning of traditional job requirements, and the overarching search for purpose and meaning in one's career, agencies need to get creative to fill open positions.

IPRA has heard this issue come up time and again when talking to members. As programming ramps up, agencies are scrambling to find staff to support them. The fact that the IPRA career center is the busiest it has ever been underscores the extent of the crisis. We understand that this is a problem our members need support addressing. We'd like to help.

As we look a little closer, there are two separate facets to this problem. Filling part-time, especially seasonal, openings versus filling full-time positions. Let's look at each in turn.

The pandemic has caused many retirees and students to leave the workforce, and many are hesitant to return. Park, recreation, and conservation agencies that rely heavily on students to fill seasonal jobs will need to capitalize on their culture and benefits to successfully recruit this year. The “fun” aspect of Parks and Recreation can be a major selling point to students who are looking for seasonal work. Perks including free use of facilities are another benefit that retail and food-service jobs can't offer. And remember that your current staff are your best recruiters for new employees. Even past seasonal workers may be able to convince younger siblings or friends to join your team. But this does require a conscious effort to build a great working environment which will keep your current team happy and make them want to help you recruit.

Filling full time positions has been a different challenge. As the Great Reshuffle implies, most of the people leaving these positions are not leaving the workforce altogether, but rather just moving to a new organization. This may be a *Great Opportunity* for our industry to attract individuals disillusioned with Corporate America and looking for purpose and meaning in their professional lives. A recent article in Association Forum's Magazine outlines this phenomenon quite well. “Nearly two-thirds of U.S. employees say that COVID-19 has caused them to reflect on their purpose in life, McKinsey research found, and for almost half of them that means the kind of work they do. With so many associations being purpose-driven, now is the time to highlight that potential for doing good and making a difference in the world.”

Of course, we all know what an amazing industry we are in – we just need to find ways to spread the word. With little wiggle room when it comes to salaries, start highlighting the intrinsic benefits instead. Step one is defining the message. Park districts, recreation departments, special recreation associations (SRAs), forest preserves, and conservation districts are all integral parts of our community. You provide healthy spaces and beneficial programs to promote wellness to our citizens. From playgrounds to theaters to zoos to river boats, our Illinois agencies provide places for the people in our communities to meet, learn and have fun. All the things our world needs so desperately right now.

Getting the message out there is the next step. When posting new positions, make sure you are focusing on this message as a way to inspire candidates. Everyone wants to make a difference. Show them that they can do just that as a member of your team. This also relates to your culture. Go ahead and brag about how dedicated (and fun) your team is. Make candidates see that your unique working environment can make all the difference. You can also focus on the perks mentioned above. Free pool passes? Tee times?



Discounts for family members? These are things that people might not even know they want until they hear about them.

As your professional association, we want to find more ways to help. Our career center is bustling with activity and can be an excellent way to promote open positions. We ran a free posting special the first two weeks of April and had 70 agencies participate with 208 jobs posted. Hopefully this was one tangible way we have been able to help during this challenging time. Additionally, our Education Roadshow Board of Regents partnered with the ORPR Department in Champaign-Urbana to develop and administer a survey on recruitment and retention challenges and strategies. The results of that survey were presented in a Learning Lab on April 27. If you did not get a chance to attend, you can access the recording on IPRAConnect. The Administration & Finance Section also hosted a roundtable back in February to discuss navigating hiring incentives and keeping quality staff in a desperate job market. These events provide members with opportunities to learn from each other and discover new ideas. Keep an eye out for future events on our website.

Another area where we have increased participation is with colleges and job fairs. IPRA will continue to promote the industry with students and provide resources for them as they enter the field. We also hope to expand our participation in job fairs in order to help our members connect with candidates.

There are some indications that the outlook is improving, albeit slowly. But in the meantime, IPRA will continue to support our members in as many ways as possible. We encourage you to take advantage of the various programs available and reach out with ideas for additional services we can provide. As a parting thought, don't forget to take care of current employees. Provide them with the support they need to grow in their own professional lives. That may mean providing them continuing education, allowing them to attend IPRA section events, encouraging them to develop their leadership skills as association volunteers or sending them to conference. Supporting a culture of learning and continuous improvement can go a long way toward a happy staff!

## IPRA Upcoming Events

### Unplug Illinois Day

July 9, 2022

#### Locations throughout Illinois

We encourage people throughout Illinois to ditch their electronic devices and "unplug" to enjoy everything that their local park, recreation and conservation agencies have to offer. A list of Unplug Illinois Day events can be found here: [community-calendar.ilipra.org](http://community-calendar.ilipra.org)

### Tools of Impact - Beyond Programs and Surveys

July 13 & 21, 2022

#### Webinar

Presented by Lydie Gutfeld, Recreation & Community Services Manager for the City of Mission Viejo. This session will work to help identify key leadership skills

that can help translate into positive connections through impact which can be connected to improving staff team performance and creating a stronger community.

### Delegating Effectively

August 10 & 18, 2022

#### Webinar

Presented by Annie Frisoli, CEO of Creating Community, LLC. Delegating effectively focuses on creating an environment based on trust and establishing a rapport with colleagues to delegate successfully. Participants will learn tools to engage and empower people to resolve their problems and implement spontaneous delegation to protect discretionary time.

Visit [ILipra.org](http://ILipra.org) for more information and to register.



# Diversity Education Institute

SEPTEMBER 9, 2022

GLENVIEW PARK DISTRICT

SAVE THE DATE





Jason Anselment  
General Counsel

## IAPD Enjoys Another Highly Successful Spring Session

The General Assembly recently concluded a very active spring session with an accelerated legislative calendar that included an April 8 adjournment date almost two months ahead of the typical schedule. Despite this condensed timeframe, the actual amount of legislative activity was not diminished. In fact, almost 3,000 of the 9,958 bills that were introduced in the 102<sup>nd</sup> General Assembly were filed this year along with almost 1,200 amendments. IAPD reviewed each of these to determine their impact on the IAPD membership and closely tracked 1,110 bills during the 14-week session.

While the faster pace, pandemic restrictions, and hybrid committee hearings presented numerous challenges, IAPD and its member agencies enjoyed another outstanding year of success at the Capitol.

### Two Additional IAPD Platform Bills Signed into Law

All three of IAPD's original platform bills were signed into law last year during the first year of the 102<sup>nd</sup> General Assembly. So, this year we added two more bills to the legislative platform. Each of these bills was also approved by both chambers during the Spring Session and has already been signed into law by the Governor.

**SB 3050 / Public Act 102-0999 (Castro, C. / Hurley, F.)** increases the bid limit under the Park District Code from \$25,000 to \$30,000. This change is effective immediately and only applies to park districts because the bid limit similarly increased for forest preserve districts and conservation districts on June 1, 2022, pursuant to **HB 3160 / Public Act 102-0460**.

The second IAPD Platform bill was originally introduced as **HB 4348 (West, M., II / Wilcox, C.)** and provides eligibility for law enforcement camera grants to those park districts, forest preserve districts, and conservation districts that maintain law enforcement agencies.

After passing the House earlier in the session, **HB 4348** stalled in the Senate. IAPD worked diligently behind the scenes to get this language incorporated into the 544-page Budget Implementation Bill or "BIMP." The BIMP, **HB 4700 /**

**Public Act 102-0699 (Harris, G. / Sims, E., Jr.)**, is an omnibus bill that contains the statutory changes that are necessary to implement the state budget.

These IAPD Platform initiatives, along with the three IAPD Platform bills that were signed into law last year during the first year of the 102<sup>nd</sup> General Assembly, will help agencies in their day-to-day operations by offering additional flexibility, creating new funding opportunities, and earning additional revenue.

### Historic Grant Funding

This year's state budget, **HB 900 / Public Act 102-0698 (Welch, E. / Sims, E., Jr.)**, contains a **historic \$56 million appropriation** for new OSLAD grants -- *twice the amount of the current level of funding!*

In recent years, IAPD members have spent countless hours advocating in support of OSLAD to avoid special fund sweeps, for budget appropriations, and to obtain the release of funds. This year's substantial increase in OSLAD matching grants is the culmination of these efforts.

Members of the General Assembly, Legislative Leadership, and Governor Pritzker also deserve much credit for recognizing that OSLAD is an essential investment of dedicated funds that will provide a substantial return to the State and that this funding is needed now more than ever.

The 3,447-page budget bill also contains the necessary reappropriations for all existing OSLAD, PARC and Public Museum grants as well as member initiative project funding from the 2019 Rebuild Illinois long-range capital plan.

### Local Revenues Protected

The issue of property taxes continued to be a significant topic of discussion at the Capitol, and IAPD remained vigilant throughout the Spring Session with regard to legislation that proposed to freeze or substantially diminish property tax revenues. This included our participation in stakeholder meetings and as one of only two organizations testifying in opposition to **HB 436 (Walker, M.)**, which would have significantly diminished local revenues by

eliminating 50% of the current exemption for new property from the limiting rate calculation under the Property Tax Extension Limitation Law (PTELL).

Ultimately, neither **HB 436 (Walker, M.)** nor any of the bills that would have reduced available property tax revenues moved forward. Instead, the state is funding property tax relief from its general revenues as part of a property tax rebate program that is outlined with other tax changes in **SB 157 / Public Act 102-0700 (Hastings, M. / Zalewski, M.)**.

One piece of property tax legislation that contains numerous changes to the Property Tax Code was approved by both the House and Senate during the final days of session. **SB 1975 / Public Act 102-0895 (Martwick, B. / Kifowit, S.)** contains language that is intended to provide flexibility in the tax levy process to park districts, library districts, community college districts, and some school districts that are subject to PTELL by providing an option for these taxing bodies to forgo increasing their annual tax levy by the CPI growth without losing the opportunity to capture that growth forever subject to certain restrictions such as a 3-year recapture limitation and a 5% cap on the increase over the tax extension in the prior year.

**SB 1975 / Public Act 102-0895** also contains changes that impact the application process for existing exemptions like those for persons with disabilities. Other changes increase the general homestead and senior citizens exemptions in the Collar Counties, but because the impacted taxing districts are all subject to the PTELL, the effect of these changes simply shifts the tax burden to other property owners and should not reduce the amount of available funding to an individual taxing district.

### Park District Model Secured

If signed by the Governor, **SB 3789 (Morrison, J. / Carroll, J.)** will establish the Decennial Committees on Local Government Efficiency Act and require most units of local government to form a committee to study local efficiencies within one year, and at least once every 10 years thereafter. A written report will need to be filed with the county that includes recommendations regarding efficiencies and increased accountability within 18 months after the formation of the committee.

When this legislation was originally introduced last year as **HB 162 (Keicher, J. / Morrison, J.)**, it was primarily focused on local government consolidation, would have allowed counties to appoint committee members, and would have also imposed many burdens and other costs on local governments, including a mandatory public survey of at least 10% of residents, as part of its unfunded mandates.

IAPD worked with the sponsor and another stakeholder organization to make several important changes to alleviate the most concerning portions of the bill and to shift focus from consolidation to efficiency. While the bill is still a mandate in that it requires a study and report every 10

years, it now gives park districts, forest preserve districts and conservation districts the ability to appoint the membership and provides an opportunity for these agencies to demonstrate the countless ways in which they efficiently deliver park, recreation, and conservation programs, facilities, and services to their residents.

If signed into law, IAPD will work with the Joint Legislative Committee to develop resources that member park districts, forest preserve districts, and conservation districts can use to formulate this report.

### Unfunded Mandates Avoided

As is the case every session, we also worked behind the scenes on numerous other bills that would have negatively impacted IAPD member agencies by imposing costly unfunded mandates, exposing agencies to potential liability, and/or attacking local control. Fortunately, most of those measures did not move forward this spring.

One bill that was approved by both chambers is **HB 4165 / Public Act 102-1036 (Cassidy, K. / Peters, R.)**, which creates the Lake Michigan Rescue Equipment Act and requires park districts and other units of local government that own a pier or drop-off on the Lake Michigan shoreline to install public rescue equipment, including, at a minimum, ring life buoys.

Although this legislation affects just a handful of IAPD members, IAPD was actively engaged in discussions with the House sponsor for many weeks to protect those members by ensuring that the proposed mandates can be practically implemented. As a result of our efforts, we were able to obtain several important clarifications and alleviate many of the concerns relating to the practicality and potential implementation costs that were contained in the original bill.

### Future Exposure to Liability Averted

A bill that IAPD supported was also approved by both chambers and is awaiting the Governor's signature as this issue goes to press. If signed by the Governor, **SB 3467 (Johnson, A. / Didech, D.)** will offer protection to park districts, forest preserve districts, conservation districts, and recreation departments from exposure to some liability when leasing property from a public utility. The legislation provides that lease provisions which require these local government agencies to indemnify or hold harmless a public utility against liability resulting from that public utility's own negligence are against public policy, unenforceable, and void.


---

The bills discussed above are only a small sample of the hundreds of bills that IAPD closely tracked this Spring Session. A complete list of these bills is available through **IAPD's Bill Tracker** on the IAPD website at [ILparks.org](http://ILparks.org). The bill status is updated as the Governor takes action on bills that were approved by both chambers.



# CREATING A WORLD CLASS *aquatics facility*

By **Shelby McDonald**, Director of Marketing and Community Relations, Waukegan Park District



## Building a splash pad instead of a pool allowed for greater flexibility in operating logistics, more operating days and reduced operational costs compared to an outdoor pool.

The decision to replace an outdoor pool ultimately led to the \$8.7 million renovation of a large community park on the southside of Waukegan. The renovation marked the beginning of an evolution for Belvidere Park from a small community playground to a regional family and entertainment destination now known as Corrine J. Rose Park. How did we get to this point? Below are the factors that led to the park's spectacular transformation.

For years, Howard E. Ganster Pool was the only public swimming pool in Waukegan, a community of nearly 90,000 residents. Built in 1956, the outdoor pool had exceeded its expected lifespan and the district needed a plan to move forward. The pool required extensive and costly annual repairs. Renovating and updating the diving well and bathhouse to meet today's standards and codes was nearly impossible, and very expensive. The Waukegan Park District prides itself in building world class facilities and a new pool would have to be a special addition.

In 2016, the Waukegan Park District completed the addition of an indoor aquatic center to the existing Field House Sports and Fitness Center. The addition added a 23,000 square foot indoor aquatics facility with an eight-lane lap pool, therapy pool and kiddie pool. All swim lessons, water aerobics group exercise classes and related programs were permanently moved from the outdoor pool to the indoor facility where weather was not a factor in day-to-day operations.

Planning to replace the outdoor pool began in 2017. An architectural firm was hired to design the outdoor aquatic center. Their first task was to develop a cost estimate for bonding the pool's replacement. Bonding was successful, and as the district began to move forward with the development phase, the projected costs had increased by a staggering \$2.7 million. The district halted the project in early 2018. After multiple community meetings and research, an alternate plan was presented to the board of commissioners.



PHOTOS COURTESY OF ROMTEC

The revised plan proposed installing a dramatic new playground, three story water tower, slides, large splash pad and a bathhouse with concessions. Along with adding picnic shelters, grills, exercise equipment, walking paths, updated parking, replacing the bocce ball courts, and renovating the recreation center, all while demolishing the administrative building to create additional space for the aquatic facility and add more open green space. Building a splash pad instead of a pool allowed for greater flexibility in operating logistics, more operating days and reduced operational costs compared to an outdoor pool. The new plan reflected the community's need for a destination park and the SplashZone was the component to tie everything together.





## Landscape Architecture and Planning

[www.hitchcockdesigngroup.com](http://www.hitchcockdesigngroup.com)

630.961.1787

[dewers@hitchcockdesigngroup.com](mailto:dewers@hitchcockdesigngroup.com)



Once the board agreed to the plan, the decision was made to move forward with the project. The administrative building had been named to honor the district's first female executive director, and the Board wanted to continue to recognize her. The park name, Belvidere Park, was changed to Corrine J. Rose Park to achieve that.

In spring of 2019, the park renovations started and were completed during winter 2020. The first component to the park was a new playground. It is a three-story Miracle Recreation XGen Playground, designed to be an above ground obstacle course. There are two play areas, one for ages 2-5 and the other for 5-12. This playground is the district's most inclusive and features equipment such as Alta Glider, Inclusive Whirl/Merry Go Round and Reflex that support the five sensory fundamentals. The tallest tower is also ADA accessible. For those intimidated by heights, the Poured in Place playground surface has many built in ground activities.





The second component, the SplashZone, opened in June 2021. It includes a three story Splashtacular structure. There is a 500-gallon dump bucket, four run-out slides, two connected kiddie slides and many water-play features throughout the structure. Immediately adjacent to the splash tower is a separate splash pad area that can be operated independently at no cost to residents or non-residents. The facility is called the SplashZone to differentiate it from a pool, although two lifeguards are on duty during operating hours.

Water pumps through the SplashZone at 3,000 gallons per minute. The facility utilizes a recirculating pump system that pushes water through a state-of-the-art Filtrex filter system before being chlorinated. This allows us to collect as much runoff water as possible in the 40,000-gallon surge tank before it is heated and returned to the tower.

The SplashZone includes a bathhouse with locker rooms, showers, restrooms, concession stand, guard office and cashier booth. There are also two restrooms on the west side of the building that services the whole park. Plenty of chaise lounges, tables and chairs are available for families to gather inside the facility. There are shade sails and designated areas for rentals. Concessions are run by a local contractor and accessible to both park and SplashZone patrons.

The SplashZone was free to residents of the Waukegan Park District for its inaugural year, and non-residents were charged a daily rate of \$6 for youth and \$10 for adults. For 2022, a minimal fee will be charged to recover a portion of the operating cost. The facility is open Memorial Day weekend through Labor Day weekend, weather dependent. Swimsuits are required in the splash tower section. The facility hosts monthly themed family nights, field trips, and internal and external camps throughout the summer.



A CONSTRUCTION TRADITION

Serving the aquatic needs of our parks and recreation clients since the 1950s

460 N. Grove Ave., Elgin, IL 60120  
LampInc.net | (847) 741-7220



Sunburst Bay Aquatic Center is part of the Cary Park District. Project Completion Date: June 2022

We are confident our experience will help you positively impact the communities you serve. Let's start a conversation today to find out how we can best serve your specific needs.



Building a tradition of quality construction since 1933.

- Construction Management
- Design / Build
- General Construction
- Integrated Project Delivery
- Project Management



PHOTOS COURTESY OF PLAY ILLINOIS

The final piece to completing the park was a percussion playground, opened in late summer of 2021. The percussion playground was financed by a Waukegan Parks Foundation capital campaign. The percussion playground, made by Percussion Play, features nine outdoor musical instruments, including drums, chimes, marimbas, and xylophones. This unique addition to the park helps attract a more diverse population.

The park is located at the corner of two major intersections in the heart of the city. With the multicolored three-story playground and SplashZone equipment, the park's transformation is on display for the entire community. Families gather on the new playground, fitness equipment, and water structures. On weekends, hundreds of children enjoy the challenges of the obstacle course and play equipment. Parents, along with their families, occupy shelters and green space throughout the park. The SplashZone averaged 145 in weekday attendance and around 250 on weekends in its first year.



Corrine J. Rose Park benefits the community in many ways through different recreational structures. Not only is this a sought-after park for the residents, but many also travel to Waukegan to visit the SplashZone. This project was a remarkable success and well managed by staff and the Board of Commissioners from start to finish. The Waukegan Park District looks forward to the residents it can serve through the park that has so many opportunities for structured and organic play, family time, events, and many other possibilities.

# Design, Supply, and Installation of Park and Recreation Structures



**Restrooms  
Pavilions  
Concessions  
And More!**

**Corrine J. Rose Park - Waukegan, IL**

**ROMTEC**

**Romtec.com  
541-496-3541  
risales@romtec.com**



# Meeting the **aquatic** needs of an entire community

**By Paul Palian, Superintendent of Marketing & Communications, Bensenville Park District**

According to the Center for Disease Control, half of all adults with disabilities do not get any aerobic physical activity. Fortunately, swimming is an activity that can be enjoyed by most everyone if the facility is accessible. Because water activities like swimming often reduce or eradicate mobility issues once in the water, swimming can also be a fun and relaxing way to exercise.



The Bensenville Park District strongly believes in the concept of developing a park system for everyone. Although many of the features of its water park and other facilities are accessible to all, the district also realized that most of its parks and facilities were completed before the Americans with Disabilities Act (ADA) was enacted in 1992, and thus were not built with these standards in mind.

Northeast DuPage Special Recreation Association (NEDSRA) Recreation Supervisor Sean Fritsch identifies several things that make the Bensenville Water Park & Splash Pad accessible, including the main entrance, which has a ramp which is easy for power chair accessibility.

There are handrails and textured, non-skid surfaces located throughout the water park. There is plenty of space on the pool deck to walk or move safely, whether walking or using a mobility device.

The facility's Splash! chair lift/hoist meets the 2010 standards, providing a safe and reliable means to ensure guests can continue to gain access to their pool, especially during retirement years. The 344-degree rotation ensures a safe transfer for those up to 400 lbs. The zero depth is very helpful, especially for children who are just getting used to the water.

Many people need assistance getting in and out of a pool as stairs or depth can be dangerous. Staff are sufficiently trained to help in their operation. At the Bensenville Water Park & Splash Pad, inclusion services also include swimming instructions simplified for persons with cognitive disabilities.

## EVOLVING AND ADAPTING

Several years following the Department of Justice's release of the 2010 Standards of Accessible Design, the district embarked on an audit of each of its facilities. Hoffman Estates-based WT Group was selected to conduct the audit and to develop an ADA Transition Plan. The plan was completed in 2020 and approved by the district's board of commissioners. The report includes recommendations that meet federal and state requirements and incorporate smart practices.

The transition plan contains a phased approach to retrofits and outlines a step-by-step approach to integrate these into capital plans. Several specific water park improvements include renovation to doors, locker rooms and showers, installation of accessible hardware and lower service counters at concession stands. These recommendations are key to the Bensenville Park District 2.0 capital plan.

The results have been positive. A meeting was held in October 2020 to engage the community in these matters and was attended by many residents. The district also developed "Access Bensenville," its newsletter for a community in motion, to communicate information and resources related to accessibility. The district is planning a grand opening for its new, state-of-the-art playground for all at Breiter-Palm Park in June 2022. The new playground will feature abundant play components that promote sensory, motor, cognitive, and social-emotional skills, as well as strength.

There is still much to be done at the water park and throughout the district, but it is an important journey to take. For more information, visit [BvilleParks.org/ada](http://BvilleParks.org/ada).

Swimming offers numerous benefits for those of all abilities. It helps differently-abled children feel more connected to others as well as gain independence while increasing physical strength and stamina without putting undue stress on the body. The following are specific benefits of swimming:

- **Builds Muscle and Bone Mass** - A 2017 article in the National Center on Health, Physical Activity and Disability (NCHPAD) blog describes swimming as “an aerobic exercise that tones the whole body and increases muscle strength and definition.” Swimming strengthens about every muscle group in the body, and according to research published in the Journal of Applied Physiology, it also builds bone mass.

- **Alleviates Pressure on Joints and Muscles** - Being in the water is often described as being weightless. The water supports your body and reduces the effects of gravity. People with disabilities such as cerebral palsy, spina bifida, or muscular dystrophy can move easier in the water due to this antigravity effect. Water yoga helps with balance, flexibility, and coordination, and low-impact aquatic activities provide aerobic and strength training without pressure on joints, says WebMD.com.

- **Improves Heart and Lung Health** - BraunAbility.com lists improving heart health among the top seven benefits of swimming: “Aerobic activities strengthen your heart. As your heart becomes larger and stronger, it's better able to pump blood, thereby increasing circulation.”

- **Reduces Pain** - Studies show that swimming reduces pain for people with multiple sclerosis (MS), arthritis and other disorders that cause chronic pain. Swimmers with these conditions can “stretch and strengthen weakened arms and legs within their full range of motion,” according to a 2000 article in WebMD. “While standing in a pool, they can also use the weight of water to help correct problems in gait and balance with less effort than on land.”

- **Increased self-confidence and independence** - Learning to swim or otherwise enjoy water can increase the self-confidence of someone with a disability. According to researchers in public health publication Salud Pública de México (2010), being involved in recreational and competitive sports such as swimming can greatly increase their independence, which, in turn, improves self-confidence,

leading to improved quality of life. Enjoying water or swimming gives an individual with a disability something he or she may excel in and this will make it easier to imagine independence in other areas.

- **Helps Maintain a Healthy Weight** - Swimming burns many calories, making it a terrific treatment for obesity. According to Swimming.org, one can burn between 200 and 400 calories in a half hour. The best strokes for weight loss are breaststroke (200 calories), backstroke (250 calories), freestyle (300 calories) and butterfly (400 calories).

- **Improves Motor Skills and Coordination** - Swimmers of all ages experience a boost to their brain development due to kicking legs and moving arms at the same time, which results in a boost in motor skills. Instructors at Premier Aquatics say swimming also helps children with disabilities work on balance and coordination in addition to gross motor skills.

- **Improves Mental Health and Social Wellbeing** - Research shows that swimming improves the symptoms of anxiety and depression, reduces stress and fatigue and builds confidence. Exercise releases endorphins and serotonin, which improve mood. With a regular swimming regimen, those chemicals can impact everything from depression to anxiety. BraunAbility notes those who learn to swim and regularly go to the pool are “sure to meet other people with disabilities who enjoy similar activities.” Participating in a swimming class with special needs also provides valuable socialization opportunities. Interacting with the instructor can teach valuable social skills as well, according to B&C Aquatics. Those interactions can foster trust, which can be a powerful tool for helping children overcome their disabilities.



## Plan Your Next Energy Efficiency Project with Help from the Ameren Illinois Early Completion Bonus

We're excited to announce that Ameren Illinois offers an **EARLY COMPLETION BONUS** for energy efficiency projects completed between now and September 2022. Lighting, HVAC, and many custom projects for your community's particular needs may be eligible for our cash incentives — and when you finish your energy efficiency project early, you can add additional money to your budget!

To find out how to save on your energy costs or, if you need help identifying projects, please contact us at **1.866.800.0747** to schedule a **FREE** Energy Consultation or visit us at [AmerenIllinoisSavings.com/Government](https://www.AmerenIllinoisSavings.com/Government).



ENERGY EFFICIENCY PROGRAM

# UNLEASH THE POTENTIAL OF **AQUATIC PLAY** IN YOUR COMMUNITY



- ✓ Splash Pads
- ✓ Action-Packed Activity Towers
- ✓ Playable Fountains
- ✓ Lazy River Splashes
- ✓ Park Amenities
- ✓ Water Management Solutions



[www.waterplay.com](http://www.waterplay.com)

1.888.890.MAKR (6257) | [info@waterplay.com](mailto:info@waterplay.com)



Distributed by:

**Imagine Nation**

INSPIRED OUTDOOR SPACES

for more inspiration, contact:

**Imagine Nation** | Tel: 847.640.0904

[www.imagineparks.com](http://www.imagineparks.com)

**WATERPLAY**  
AUTHORIZED  
DEALER

# Chicagoland's Largest Supplier of Certified Playground Mulch



MULCH ■ SOIL ■ COMPOST ■ AGGREGATES

**Buy Direct  
from the  
Manufacturer**

**MULCHCENTER.COM  
847-459-7200**

*Pickup or delivery available.*



Still, access for those of all abilities needs to be a priority for park districts that have an aquatics program. The U.S. Department of Justice offered the following accessibility considerations for public entities such as park districts as part of its 2010 Standards for Accessible Design:

- How to provide swimming programs in the most integrated setting appropriate;
- The ways in which people participate in the programs (e.g., individually, in families, in youth groups);
- Locations where the programs are offered;
- What programs are offered at each pool and to which constituencies (e.g., family swims, children's swimming lessons, older adult exercise classes, high school swim meets);
- Which pools are accessible and to what extent; and
- Level of dispersion of the accessible locations and convenience to reach them (e.g., one pool in each quadrant of the town, all on accessible mass transit).





# Group

Engineering • Design • Consulting

[wtgroup.com](http://wtgroup.com)

[info@wtgroup.com](mailto:info@wtgroup.com)



Since 1971, the WT Group has been passionate about providing engineering, design and consulting solutions for the communities in which we live and work. We are committed to providing the strategies necessary to make recreation and public facilities safe, compliant and accessible to all members of the community.

# Saving Energy is Like a Walk in the Park

By embracing energy efficiency, your park district can lower its energy bills, freeing up additional funds to provide even better recreational experiences for the community. Moreover, investment in energy efficiency demonstrates leadership on sustainability issues, helping ensure outdoor spaces are beautiful and usable for future generations.



The ComEd Energy Efficiency Program offers discounts, incentives and services for parks and recreation organizations to upgrade indoor and outdoor lighting, modernize heating and cooling systems, install energy management technology, and implement other energy efficiency opportunities.

## Uncover Savings Opportunities with FREE Facility Assessments

ComEd offers FREE facility assessments to help your park district identify energy-saving opportunities, whether it's lighting, HVAC systems, chillers or motors. A ComEd energy engineer will spend approximately two hours with you at your facility to identify energy-efficiency opportunities and provide a report detailing recommended energy efficiency projects, many with short turnaround times and minimal disruption. Each recommendation includes estimated cost and projected ROI.

Smaller park district facilities—those with under 400 kW peak demand—are eligible for the Small Business offering.

Getting started is easy! Simply complete the business facility assessment request form (scan QR code), or call 1-855-433-2700. Once we receive your request, a ComEd representative will contact you to schedule your assessment.



SCAN QR CODE TO GO TO THE ASSESSMENT REQUEST FORM



## Enhanced LED Lighting and Controls

From gymnasiums and swimming pools to tennis courts and ballfields, park district participants rely on bright lighting for their safety and enjoyment. Energy-efficient LED fixtures direct daylight-quality light only where it is wanted, eliminating negative impacts on surrounding areas and neighbors. LEDs instantly turn on to full brightness as soon as light is needed. ComEd provides incentives for installation of LEDs, as well as occupancy sensors, daylight controls and timers, helping make sure areas are well lit whenever they need to be—and aren't wasting energy when they don't.

All public sector customers, including park district facilities, are eligible for instant discounts on commercial-grade lighting and exit sign products. Save instantly at the time of purchase, with no paperwork necessary!

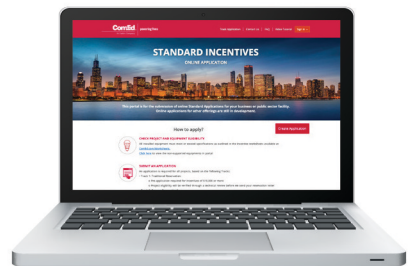
## Enhance Indoor Comfort with HVAC Upgrades

Heating, ventilation and cooling accounts for nearly a third of energy use in a typical recreation facility. ComEd offers incentives and technical assistance to tune-up or replace your inefficient HVAC system, saving money while improving the comfort of guests. Consider installing air side economizers—also incentivized—which take in and filter outside air to cool the building more efficiently.

Each HVAC unit tune-up, conducted by a trained ComEd Service Provider, includes a thorough inspection and adjustment of the unit's thermostat, economizer, refrigerant charge, coils and belts for optimal performance. Incentives are also available for HVAC system component upgrades like water and air-cooled chillers, and energy management systems.

## Money-Saving Solutions for Pools and Aquatic Centers

Did you know that ComEd can help make your swimming pools and aquatic centers more energy efficient? Reduce the energy use of water pumps by installing variable speed drives, which continually alter the motor speed to meet actual demand. Likewise, demand-controlled ventilation modulates airflow throughout the aquatic center, easing the stress on HVAC systems.



## Quickly Apply Online & Check Application Status

Ready to apply? Create an online profile to:

- Check project and equipment eligibility
- Submit an application
- Install equipment or perform project work
- Submit a final application
- Receive incentive payment

To get started, scan the QR code or go to <https://comedportal.anbetrack.com/Standard/>



## Want More Information?

Visit [www.ComEd.com/IPRA](http://www.ComEd.com/IPRA), call 1-855-433-2700, or email [BusinessEE@ComEd.com](mailto:BusinessEE@ComEd.com) to speak with a ComEd Energy Efficiency Program representative.

**ComEd**  
Energy Efficiency Program

COMED IS A PROUD MEMBER OF ILLINOIS ASSOCIATION OF PARK DISTRICTS AND ILLINOIS PARK AND RECREATION ASSOCIATION.



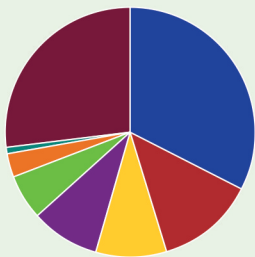
## ComEd Energy Savings Case Study: Salt Creek Rural Park District

The Salt Creek Rural Park District, which serves portions of Arlington Heights, Palatine and Rolling Meadows, features a nine-hole golf course, aquatic driving range, fishing lake and walking path. Park district facilities had exterior lighting that was dim and required frequent bulb changes. Not only was this a strain on maintenance resources, it also created potential safety hazards. The park district decided to make lighting improvements and turned to the ComEd Energy Efficiency Program for incentives to make the project more affordable.

Additionally, on the golf course, staff removed 1,000-watt fixtures and replaced them with new LED fixtures to reduce maintenance costs.

“Before we did the upgrades, when you looked out over the property and the building exterior, everything had an orange glow at night,” Paisley said. “Now, it’s much more inviting, and the lights have a much more uniform look.”

### Electricity Consumption by Parks & Recreation Facilities



HEATING & COOLING	33%
LIGHTING	13%
REFRIGERATION	9%
VENTILATION	9%
COMPUTERS	6%
OFFICE EQUIPMENT	3%
COOKING	1%
OTHER	27%

Source: U.S. Energy Information Administration

### The Solution

The ComEd team worked with Chris Paisley, superintendent of parks and golf, and his staff to identify money-saving opportunities with LED lighting upgrades at Twin Lakes Golf Course and Recreation Area. Additionally, the park district took advantage of ComEd incentives to reduce project and operational costs.

To improve aesthetics, Paisley directed numerous upgrades to building perimeters. The park district installed new exterior LED wall pack lighting at the clubhouse, and replaced conventional high-intensity discharge fixtures (including high-pressure sodium lights) with energy-efficient LEDs, giving the perimeter of the building a cleaner appearance.

### Project Benefits

The Salt Creek Park District received \$7,610 in incentives from the ComEd Energy Efficiency Program and will save approximately \$5,500 in annual energy costs as a result of the LED lighting upgrades. In addition to the financial benefits, Paisley has observed improved staff productivity. The new LED lights have also contributed to safer working conditions because the maintenance staff does not have to perform high-pole bulb changes as frequently.

The park district is pursuing additional energy-efficient lighting opportunities at other surrounding park locations. Paisley intends to continue with the ComEd Energy Efficiency Program until all park district facilities are upgraded.

### Technical Assistance, Incentives on New Construction Projects

Is your park district planning a major renovation or new construction project? The ComEd Energy Efficiency Program provides comprehensive building modeling services at no cost to you. We will work with your design team to maximize savings and incentives to help your new construction project exceed Illinois Energy Conservation Code requirements.

New developments and major renovations of at least 5,000 sq. ft. are eligible. Be sure to involve the ComEd Energy Efficiency Program team as soon as possible—the earlier we are engaged in the design process, the higher the incentive values and the greater the long-term savings!

**PROJECT SNAPSHOT: Salt Creek Rural Park District**

Energy-saving improvements	<b>LED Lighting</b>
Estimated annual energy savings	<b>62,000 kWh</b>
Total project cost	<b>\$11,000</b>
ComEd Energy Efficiency Program incentive	<b>\$7,610</b>
Estimated annual cost savings	<b>\$5,500</b>
Estimated payback after incentives	<b>7 months</b>

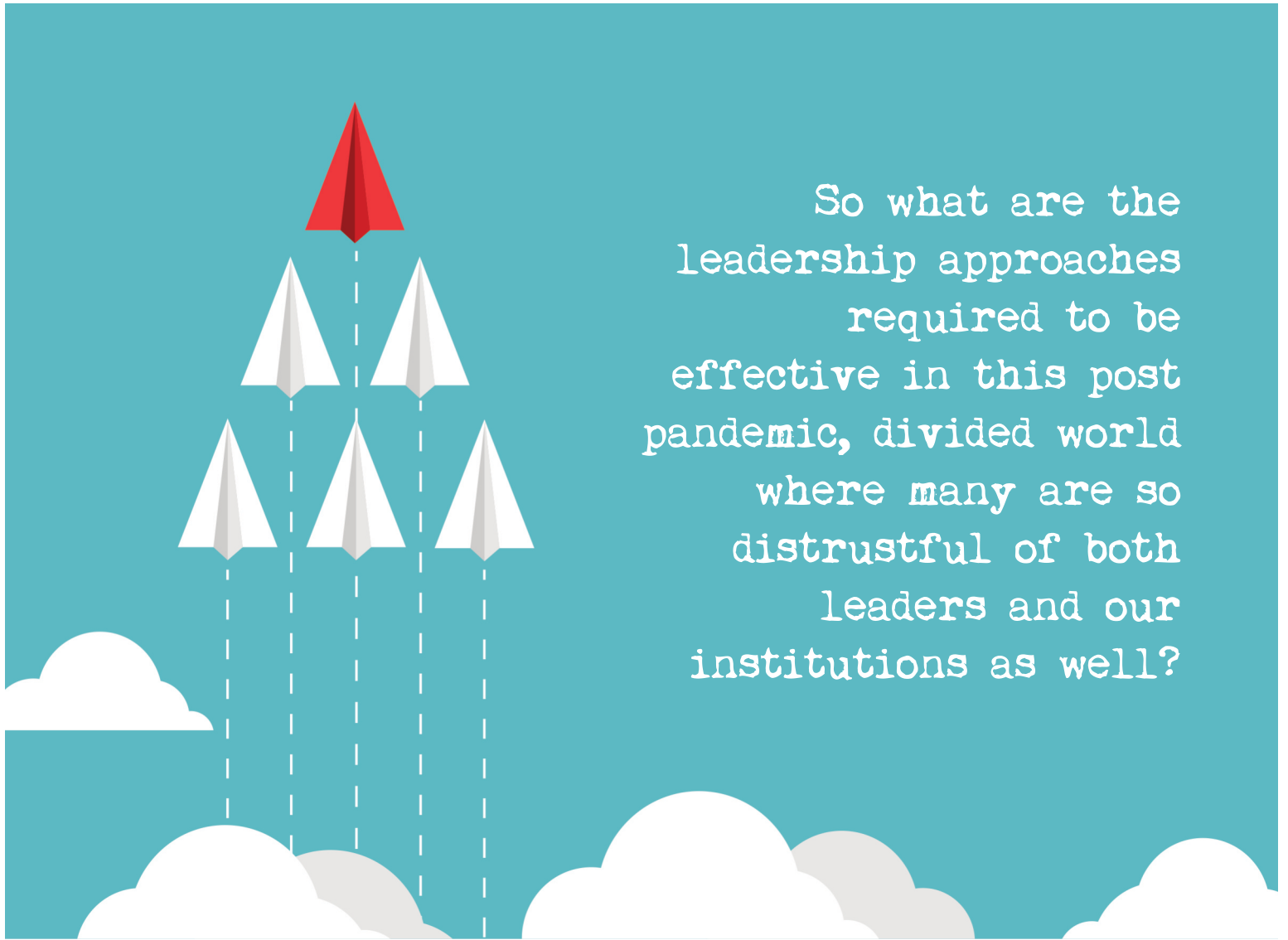
\*Estimated annual cost savings are based on an electricity rate of 8.87 cents per kWh.

By Ian Hill

The late American business guru Peter F. Drucker once said "Every few hundred years in Western history there occurs a sharp transformation. Within a few short decades, society rearranges itself. Fifty years later, there is a new world. And the people born then cannot even imagine the world in which their grandparents lived." I think pre-pandemic, Drucker was right, we were in a time of transformation. However, we are no longer in a time of transformation, we are in unprecedented times!



# The Leadership in Unprecedented Times



So what are the leadership approaches required to be effective in this post pandemic, divided world where many are so distrustful of both leaders and our institutions as well?

So what are the leadership approaches required to be effective in this post pandemic, divided world where many are so distrustful of both leaders and our institutions as well? What are the leadership approaches required for success?

If we see and understand the changed “ecosystem” in which we live today, we then clearly understand that the “command and control” autocratic approach to leadership is not what the times require. It is not the approach that will get best from our people, nor will it be the approach that solves the complex and multifaceted challenges that we face today. The days of the individual on the white horse swooping in to save the day are long gone, the challenges we face are too much for any one person to solve. I call this leadership approach a “Community Builder.”

The Community Builder has the ability to marshal all the forms of human capital (intelligence, passion, work effort, innovation and so on) of the various stakeholders they interact with and move them towards a common goal. Rather than being a leader who requires, they are leaders who inspire. The Community Builder brings significant value to those they serve and those they lead. They channel the energy of stake holders by acting as a catalyst, convener and force multipliers. The Community Builder has the capacity and skill to tap into the collective intelligence of all stakeholders to create great plans that have deep buy-in and actually produce meaningful solutions and tangible results.

The Community Builder is authentic, honest, direct, and comfortable in their own skin. They care about others and do what's best for the broader good even when it hurts.



The challenge for leader's today is more is, expected than ever before.  
As leaders, we are expected to be great as spouses, parents, business leaders and community members!

While it may seem simplistic, perhaps the kind of leadership I've described does not need to be all that complicated. It may just boil down to three leadership competencies.

First, we want our leaders to be **Agents of Change**. Leaders who understand, demonstrate, and exert influence by building trusting relationships to act as a catalyst for change. We are hungry for leaders who have the courage, passion, and motivation that is respected by others so that barriers can be addressed and overcome.

The Agent of Change is keenly aware that “the skills, abilities and competencies that won the battles behind us may not be the skills, abilities and competencies to win the battles before us.” The enlightened leaders are not changing their values or principles; they are looking at the changed “ecosystem” around them and adjusting their leadership approaches to meet the changed context they operate in.

They are also aware that the aforementioned “command and control” autocratic approach to leadership is misguided. Instead, I would suggest the times actually require a “command with limited or even no control” approach. There are just not enough resources (time, energy, effort) to micromanage all that we have to get done. So we have to let go and marshal (move into action) the human capital around us towards the goals we hope to achieve.

Next, we want leaders who are big picture, holistic, optimistic, proactive, also known as **Systems Thinkers**. This big picture or systems approach is essential because the issues in our communities and departments are too complicated to be solved by any one person or sector.

The challenge for leader's today is more is expected than ever before. As leaders, we are expected to be great as spouses, parents, business leaders and community members! Regrettably, we have a finite amount of time,

energy, and resources at our disposal to get done all that is expected of us to do. To be our best we must have some way to be able to accomplish all that we want to achieve.

Archimedes said, "Give me a place to stand and I will move the world." How he was able to make such a bold statement is simple, he had a system. Archimedes's lever and fulcrum made it possible to move what was previously impossible for one man to move. In the same sense, what is seemingly impossible to get done (all that is expected of us as leaders) can be accomplished with great systems.

There is another challenge we have to deal with as leaders; systems are being constantly created. They can either be initially created or they will naturally and organically evolve on their own. Whether it is our own leadership habits or the "that's just what we do it around here" way of doing business, make no mistake, there are systems constantly evolving and taking root in all that we do.

Fritjot Capra said that "Systems' thinking involves shifting attention from the parts to the whole, from things to relationships, from structures to processes, from hierarchies to networks, from the rational to the intuitive, from analysis to creation."

Simply put, "a system is an organized collection of parts that are highly integrated to accomplish an overall goal." By definition then, "the system is systemic, meaning relating to, or affecting, the entire system. (This is not to be confused with systematic, which can mean merely that something is methodological. Thus, methodological thinking -- systematic thinking -- does not necessarily mean systems thinking.)"

The times require leaders that don't leave systems development to "organic chance," instead they set out to proactively create the systems that will produce the results they desire. They realize that if they are unsatisfied with the results they are getting, they take a look at the systems that are in place and make the change the times require. We don't expect leaders to do it by themselves either, we want them instead to be **Catalysts for Responsibility** in

others, engaging and cultivating a sense of pride and ownership in all those around them.

Today's effective leaders are in command but not necessarily in control. They cultivate a sense of ownership in all stakeholders; those they lead, work with, work for and in the communities they serve. They realize that there are proven ways to improve efficiency, effectiveness and get more done with less, and they are sophisticated enough to know that these ways are often intangible! Take for example **Pride**.

Pride is an intangible force of human capital unlike any other. When pride is instilled, cultivated and deployed it creates significant impact. Investing time and energy into building organizational and individual stakeholder pride will provide greater dividends than any other tool in a leader's tool kit.

Deep organizational pride leads to innovation and creative ideas, increased participation in problem solving, a sense of ownership that creates a "the organization is a reflection of me" attitude and higher morale.

Employees with a deep sense of individual pride; regularly exceeded job expectations, take ownership of their specific task, and live out the spirit of their job description and not just the letter. They need less supervision. The cumulative effect of increased both organizational and individual pride is that more is done with less!

Change is here, but it's not trickling down from an ivory tower. It's coming from the bottom up, from leaders who recognize they may not be able to change the whole "big bad" world, however, they can handle their little corner of it.

I believe every individual, every department, every neighborhood and every community is one idea, one voice, one action – one person – away from being better tomorrow than it was yesterday. By understanding the leadership competencies that the times require, you can be that one person!



# BRING NEW LIFE TO YOUR PUBLICATIONS!

## 5 Powerful Features to Help Showcase Your Programs

EFFECTIVELY ENGAGE WITH YOUR COMMUNITY BY UPLOADING ALL YOUR PUBLICATIONS TO ISSUU. EASILY PROMOTE YOUR ACTIVITIES BY INSTANTLY TRANSFORMING STATIC PDFS INTO DYNAMIC DIGITAL EXPERIENCES. CREATE ADDITIONAL ASSETS FROM JUST ONE PDF AT THE CLICK OF A BUTTON, THEN EASILY SHARE WITH YOUR ENTIRE AUDIENCE.

With the popularity of digital publications and virtual content, park and recreation departments across the country have been forced to adapt their marketing strategies beyond traditional (and often costly) printed formats in order to reach more community members and increase program engagement. As a result, many agencies have been working to find new, unique ways to publish content digitally and achieve optimal exposure.

With Issuu, you can transform your park and recreation marketing strategy through the unique ability to bring your content and social media efforts to life.

Issuu is an easy-to-use platform that allows you to publish and track numerous types of single and multi-page documents:

- programming catalogs/guides,
- sports tournament programs and team packets,
- sponsorship proposals,
- community and senior center newsletters,
- annual reports,
- new park and facility construction documents / master plans,
- event registration packets and permits.



## 1 Quickly upload & promote your content with a few clicks of a button

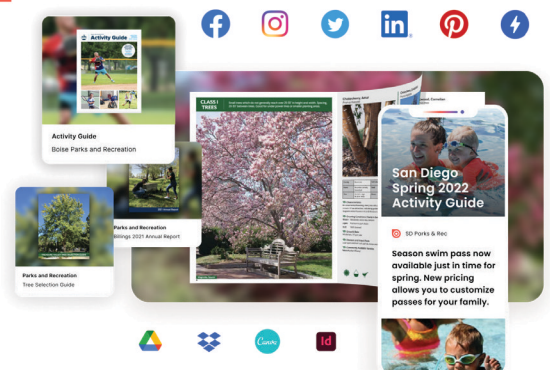
**You don't have to be a computer programmer to use Issuu.** Issuu hosts a number of valuable, user-friendly features that can help you conveniently and effectively distribute content. Quickly create a flipbook then embed it on your website or blog.

**Issuu offers a full screen sharing experience,** allowing for optimal engagement and a distraction-free environment. It's easy to copy a full screen sharing link to promote the content via email and social media campaigns. Full screen sharing enables your catalog to take on a more captivating and stimulating form for readers.

Issuu is the ideal solution to bring your program guides, brochures, athletic/team manuals, master plans, and annual reports to life! See why thousands of communities and organizations across the U.S. are using Issuu to publish their materials and view case studies at [www.issuu.com/go/parks](http://www.issuu.com/go/parks).

## 2 Optimize your social media presence

Professional stories are more important than ever and can be a great way to get your content noticed. Repurpose publication content for your social media channels to make sure everyone is aware of the latest updates. Issuu's **visual stories feature** can help you to stimulate traffic to park and recreation social media channels and further increase engagement. Along with visual stories, consider utilizing the **Article Stories** generator for mobile readers. Our system automatically generates individual pieces of content from your collective catalog, which can then be shared on social media platforms.



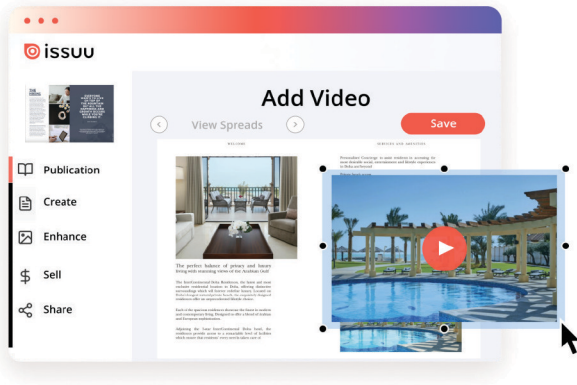


# 3 Drive web traffic by adding links in your flipbooks

Issuu's embed links feature gives you the opportunity to include important information directly in your catalog. Embedding brochures, branding, and/or external websites (i.e. your city's park and recreation home page or a link to an activity sign-up page) is a useful way to cultivate a broader audience as well as generate interest in your park and recreation department's offerings. You can also use Issuu's **embed on website** feature to keep your own website as the primary distribution outlet.



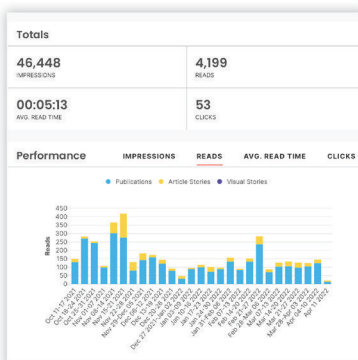
©City of Mesa



# 4 Embed videos in flipbooks and watch reader engagement skyrocket

Issuu helps you embed YouTube and Vimeo videos directly into your digital flipbook – a great way to boost engagement and deliver a multimedia experience to your readers. Videos help readers interact with your content and propels them to learn more about programs and events. Adding video engages your community and shows parents (especially those with littles) exactly what to expect when they register for a class, camp, or program.

# 5 Make data-driven publishing decisions on the fly and in real-time



Once you've launched and shared your content, check out your dashboard for up-to-date information on impressions, reads, read-time, clicks and more — view by publication or even by page! Unlike traditional printed publications, Issuu's **digital statistics** feature allows you to track real-time data and properly evaluate the overall effectiveness of your marketing strategy. You'll gain beneficial insight into your publication's audience through graphs and other visuals that help you determine reader trends.

## Issuu in Illinois

Illinois park and rec departments, Chambers of Commerce, and communities using Issuu include:

- Itasca
- Palatine
- Tinley
- Wheeling
- Belleville
- Worth
- Elk Grove
- La Grange
- Warrenville
- Bolingbrook
- North Riverside
- Geneva

## Illinois Park & Rec Agencies **SAVE 30%\*!**

Offer ends August 30, 2022

		BEST VALUE	
	Starter <b>\$13/mo</b> \$19/mo	Premium <b>\$28/mo</b> \$40/mo	Optimum <b>\$188/mo</b> \$269/mo
Rates shown are with an annual subscription and discount code applied.			
Number of users	1 user	3 users	25 users
Published documents	Unlimited	Unlimited	Unlimited
Pages per upload	500	5,000	5,000
File size limits	100MB	500MB	2GB

### CHOOSE THE DIGITAL PUBLISHING PLAN THAT'S RIGHT FOR YOUR AGENCY

\*Receive 30% OFF your new annual Issuu subscription now through August 30, 2022. Scan the QR code or go to [issuu.com/go/parks](https://issuu.com/go/parks). Be sure to enter the special discount code "Park30-ACQ" at checkout if prompted.



## PEOPLE & PLACES



### Ronald D. Lehman Celebrates 50 Years as a Channahon Park District Commissioner

**Ronald D. Lehman** is celebrating five decades of loyal service as a commissioner of the Channahon Park District. Ron was appointed to the board on April 13, 1972, exactly eight months after the park district's formation. He helped to guide the park district

through its impressive growth from one 12-acre park to more than 500 acres, 19 parks, and four facilities. He was instrumental in the acquisition of 120 acres of land which later became Community Park, the park district's largest park; and he spearheaded planning for the development and opening of Tomahawk Aquatic Center and Heritage Bluffs Public Golf Club, which has been recognized as one of the top public golf facilities in the nation. Ron has cultivated numerous community partnerships, the most recent of which resulted in Sengo Adventure Garden, the first inclusive playground in the area. He is a founding member of the People for Channahon Parks Foundation, which has raised more than \$2 million to build Arroyo Trails, a unique 78-acre nature park and trail.

Ron's leadership has transcended the boundaries of Channahon through his service on the Illinois Association of Park District's Board of Trustees for eight years, two of which he served as president; and his service on the National Recreation and Park Association's Board of Directors for 12 years, serving as Chairman for six of those years. Ron was recognized as IAPD's Commissioner of the Year in 1993, the American Park and Recreation Society's Meritorious Citizen of the Year Award in 1995, the NRPA Great Lakes Region Citizen Board Member of the Year in 1997, and the Illinois Park and Recreation Association's Distinguished Service to Leisure Award in 2007. He is a founding member of the National Association of Park Foundations, where the prestigious Lehman Award was established to recognize excellence in park foundations. Under his leadership, the Channahon Park District has been recognized as an IAPD/IPRA Distinguished Accredited Agency since 2014 and was a National Gold Medal Finalist in 1996 and a Grand Award Winner in 1997.

Congratulations to Ron for 50 years of faithful and inspiring service to parks and recreation.



### Bourbonnais Township Park District Hires Dr. Edward Piatt as Executive Director

Bourbonnais Township Park District hired Dr.

Edward Piatt as executive director at their April board meeting. Piatt is a former adjunct professor of business at Trevecca Nazarene University in the doctoral program and serves as a doctoral advisor. In addition, he is also an adjunct professor of business at Olivet Nazarene University.

He is a bi-weekly business columnist for the Daily Journal writing on a range of business topics from strategic, transformational, servant leadership, leadership theories, organizational culture, conflict resolution, emotional intelligence, and how to create diamond organizations. He has written over 350 articles in the last ten years. He is considered an expert in ethical leadership and Emotional Intelligence (EI).

He retired as the north east senior account manager for the Illinois Department of Commerce & Economic Opportunity and was tasked with representing the Governor's economic development strategy for the northeast region. He has worked in state government for 32 years as a front line manager.

He has a bachelor's of science degree in business management from Purdue University, master's of business administration from Governors State University, and a doctorate in ethical leadership from Olivet Nazarene University.

## In Memoriam



Illinois Parks and Recreation magazine extends its condolences to the family of **Dean Parkman**, who passed away April 26, 2022.

Dean moved to Lindenhurst with his family in 1981 when he was assigned to U.S. Army Recruiting Command at Fort Sheridan. He retired from the Army in 1988 after serving 20 years as an infantry officer.

After completion of law school

in 1991, Dean started his second career as an attorney with the Department of Veteran Affairs from 1992 to 2007.

Dean became a park commissioner in 1991 and served as the president of the Lindenhurst Park District for over 30 years. At that time, the Lindenhurst Park District had an office at the village hall. Since his service began on the board, the Lindenhurst Park District has completed many major projects including Phase I and II of the Community Center, acquisition and development of Millennium Park, acquisition and development of Oak Ridge Park, and most recently, a new playground in front of the Community Center. Dean served on IAPD's Board of Commissioners as a trustee and was also a member of the Joint Legislative and Joint Distinguished Park and Recreation Accreditation Committees.

He was a member of St. Raphael the Archangel Church, Lake Villa VFW Post #4308, and coached for the Lindenhurst Soccer Program for many years. Dean enjoyed gardening, traveling, and especially spending time with his family.



## Park District of Franklin Park Announces New Director

The Park District of Franklin Park announced that **Dan LoCascio** has been named to the position of director of parks and recreation after the retirement of Joe Modrich on May 1.

Dan LoCascio started his parks and recreation career as an intern at the Park District of Franklin Park in 2003. He was hired full-time in 2004, and in various roles since then he managed Franklin Park's camps, aquatics/pool, fitness programs, athletic programming, and the Community Center. In 2012, Discovery Day Camp was awarded the IPRA/IAPD Outstanding Program/Special Event. Dan was promoted to superintendent of recreation in 2018. He was awarded the Recreation Section Professional of the Year in 2015 and the Distinguished Member in 2021. He has an undergraduate degree from Northern Illinois University and a masters degree in recreation administration from Aurora University at George Williams College.

## Want to Read More?

Keep up with the latest milestones, new hires, promotions and award winners in the Illinois park and recreation industry online. Visit our website, [www.ILparks.org](http://www.ILparks.org), select IP&R Magazine and then People and Places.

## Want to submit news from your agency for People & Places?

E-mail information and jpegs to [wutterback@ILparks.org](mailto:wutterback@ILparks.org).

Jpegs should be 300 dpi at about 2 inches tall.



### The Park District of Franklin Park Announces Retirement of Director

The Park District of Franklin Park announced the retirement of **Joe Modrich** as director of parks and recreation after 22 years of service in the position on May 1.

Modrich had his first tenure with the district from 1974 to 1990, then came back in 2000 as director. During his time as director, the park district invested more than \$23 million for park district renovations/acquisitions and facility upgrades, while securing \$12 million in grants for capital projects, parks were redesigned and renovated, girls/women's locker rooms were installed, the Ice Arena's original refrigeration system was replaced along with other upgrades, and both the Community Center and the pool were renovated.

**WARRANTY**  
★  
**10**  
★  
**YEAR**  
**WARRANTY**

The Andrae Family  
Wellness & Recreation Trail

LOWER OVERLOOK

- ✓ Weather-resistant
- ✓ 10-year warranty
- ✓ Easy to clean
- ✓ Easy to install
- ✓ Easy mounting and hardware solutions

**izone**  
Imaging

**Signs & Graphics**  
**Guaranteed to Last**

888-464-9663 • [izoneimaging.com](http://izoneimaging.com)

To request your FREE sample kit: [info@izoneimaging.com](mailto:info@izoneimaging.com)

## CONSTRUCTION MANAGEMENT - DESIGN BUILD



New Construction • Additions / Renovations • Site Recreation • LEED / Sustainable Construction



For additional information contact:  
630.628.8500  
[www.fquinncorp.com](http://www.fquinncorp.com)

Frederick Quinn Corporation  
103 S. Church Street  
Addison, IL 60101



**ACCOUNTANTS****Lauterbach & Amen, LLP**

Ron Amen  
 ramen@lauterbachamen.com  
 668 N. River Rd.  
 Naperville, IL 60563  
 www.lauterbachamen.com  
 630-393-1483 PH

**Sikich LLP**

Anthony Cervini  
 anthony.cervini@sikich.com  
 1415 W. Diehl Rd., Suite 400  
 Naperville, IL 60563  
 www.sikich.com  
 630-566-8574 PH

**ARCHITECTS/ENGINEERS****BFW Engineering & Testing Inc.**

Mark Thompson  
 mthompson@bfwengineers.com  
 500 S.17th St.  
 Paducah, KY 42003  
 www.bfwengineers.com  
 270-443-1995 PH

**Dewberry Architects Inc.**

Daniel Atilano  
 datilano@dewberry.com  
 132 N York St., Suite 2C  
 Elmhurst, IL 60126  
 www.dewberry.com  
 847-841-0571 PH

**DLA Architects, Ltd.**

Lou Noto  
 l.noto@dla-ltd.com  
 2 Pierce Pl., Suite 1300  
 Itasca, IL 60143  
 www.dla-ltd.com  
 847-742-4063 PH

**Eriksson Engineering Associates**

Michael Renner  
 mrenner@eea-ltd.com  
 145 Commerce Dr., Suite A  
 Grayslake, IL 60030-7834  
 www.eea-ltd.com  
 847-223-4804 PH

**Farnsworth Group, Inc.**

Bruce Brown  
 bbrown@f-w.com  
 100 Walnut St., Suite 200  
 Peoria, IL 61602  
 www.f-w.com  
 309-689-9888

**FGM Architects, Inc.**

John Dzarnowski  
 johnd@fgmarchitects.com  
 1211 W 22nd St., Suite 705  
 Oak Brook, IL 60523  
 www.fgmarchitects.com  
 630-574-8300 PH

**Gewalt Hamilton Associates, Inc.**

Tom Rychlik  
 trychlik@gha-engineers.com  
 625 Forest Edge Dr.  
 Vernon Hills, IL 60061-4104  
 www.gha-engineers.com  
 847-478-9700 PH

**HR Green, Inc.**

Dave Reitz  
 dreitz@hrgreen.com  
 420 N. Front St., Suite 100  
 McHenry, IL 60050-5528  
 www.hrgreen.com  
 815-385-1778 PH

**Inspec, Inc.**

David Foler  
 dfoler@inspec.com  
 8618 W. Catalpa, Suites 1109-1110  
 Chicago, IL 60656-1161  
 www.inspec.com  
 773-892-2771 PH

**MSA Professional Services, Inc.**

Alyssa Scheuneman  
 ascheuneman@msa-ps.com  
 201 W. Springfield Ave., Ste 400  
 Champaign, IL 61820  
 www.msa-ps.com  
 217-531-4964 PH

**Rocco Castellano Design Studio Inc.**

Rocco Castellano  
 rocco.castellano@castellano.design  
 30 N. Vincennes Circle  
 Racine, WI 53402  
 312-925-0907 PH

**Sheehan Nagle Hartray Architects**

Eric Penney  
 eric@snh-a.com  
 130 E. Randolph, Suite 3100  
 Chicago, IL 60601  
 www.snh-a.com  
 312-633-2900 PH

**TRIA Architecture**

James Petrakos, AIA, LEED AP  
 jpetrakos@tria-arch.com  
 901 McClintock Dr., Suite 100  
 Burr Ridge, IL 60527  
 630-455-4500 PH

**Veregy**

Danielle Melone  
 dmelone@veregy.com  
 17 W. 635 Butterfield Rd., #315  
 Oakbrook Terrace, IL 60181  
 630-200-5204 PH

**Wight & Company**

Robert Ijams  
 rijams@wightco.com  
 2500 N Frontage Rd.  
 Darien, IL 60561  
 www.wightco.com  
 630-739-6644 PH

**Williams Architects, Ltd.**

Karen Lellios  
 ktellios@williams-architects.com  
 500 Park Blvd., Suite 800  
 Itasca, IL 60143  
 630-221-1212 PH

**WT Group**

Troy Triphahn  
 Troy.Triphahn@wtengineering.com  
 2675 Pratum Ave.  
 Hoffman Estates, IL 60192  
 www.wtengineering.com  
 224-293-6333

**AQUATICS****Halogen Supply Company, Inc.**

Rich Hellgeth  
 rhellgeth@halogensupply.com  
 4653 W. Lawrence Ave.  
 Chicago, IL 0630-2532  
 www.halogensupply.com  
 773-286-6300 PH

**ATTORNEYS****Ancel Glink**

Derke Price  
 dprice@ancelglink.com  
 140 S. Dearborn St., 6th Fl  
 Chicago, IL 60603  
 www.ancelglink.com  
 312-782-7606 PH

**Chapman and Cutler LLP**

Kelly Kost  
 kost@chapman.com  
 111 W. Monroe St., 13th Fl  
 Chicago, IL 60603-4011  
 www.chapman.com  
 312-845-3814 PH

**Chico & Nunes, P.C.**

Timothy King  
tking@chiconunes.com  
333 West Wacker Drive  
Suite 1420  
Chicago, IL 60606  
www.chiconunes.com  
312-884-5092 PH

**Ice Miller LLP**

Shelly Scinto  
shelly.scinto@icemiller.com  
200 W. Madison St., Suite 3500  
Chicago, IL 60606-3417  
www.icemiller.com  
312-726-8116 PH

**Montana & Welch, LLC**

Erin Blake  
eblake@montanawelch.com  
11950 S. Harlem Ave., Suite 102  
Palos Heights, IL 60463-1161  
www.montanawelch.com  
708-448-7005 PH

**Robbins Schwartz**

Steven Adams  
sadams@robbins-schwartz.com  
55 W. Monroe, Suite 800  
Chicago, IL 60603  
www.robbins-schwartz.com  
312-332-7760 PH

**Tressler LLP**

Andrew Paine  
apaine@tresslerllp.com  
233 S. Wacker Dr., 61st Fl  
Chicago, IL 60606  
www.tresslerllp.com  
312-627-4154 PH

**AQUATICS**

**Aqua Pure Enterprises, Inc.**

Thomas Todner  
tom@aquapure-il.com  
1404 Joliet Rd., Suite A  
Romeoville, IL 60446  
www.aquarepure-IL.com  
630-771-1310 PH

**Spear Corporation**

Sam Blake  
sblake@spearcorp.com  
12966 N. County Rd. 50 W.  
Roachdale, IN 46172  
www.spearcorp.com  
765-577-3100 PH

**Vortex Aquatic Structures Intl.**

Ryan Eccles  
recclles@vortex-intl.com  
11024 Bailey Rd., Unit C  
Cornelius, NC 28031  
www.vortex-intl.com  
877-586-7839 PH

**BACKGROUND CHECKS**

**NCSI**

David Rye  
laurens@ncsisafe.com  
807 Broadway St. NE, #300  
Minneapolis, MN 55413  
www.ssci2000.com  
802-829-1516 PH

**BANKING**

**Wintrust Government Funds**

Tim O'Brien  
tobrien@wintrust.com  
231 S LaSalle St., 2nd Floor  
Chicago, IL 60604  
www.wintrust.com  
312-981-0765 PH

**BRONZE PLAQUES/STATUES**

**Bronze Memorial Company**

Rick Gurrieri  
bronzememco@gmail.com  
1805 Beach St.  
Broadview, IL 60155  
www.bronzememco.com  
773-276-7972 PH

**CONCESSION EQUIPMENT & SUPPLIES**

**Gold Medal Products, Co.**

Jim Such  
jsuch@gmpopcorn.com  
450 N. York Rd  
Bensenville, IL 60106-1606  
www.goldmedalchicago.com  
800-767-5352 PH

**CONSTRUCTION MANAGEMENT**

**Byrne & Jones Construction**

Britton Taulbee  
britt@byrneandjones.com  
13940 St. Charles Rock Road  
St. Louis, MO 63044  
www.byrneandjones.com  
314-567-7997 PH

**Corporate Construction Services**

Michael Rink  
ccs@corporateconstructionservices.com  
1323 Butterfield Rd., Suite 110  
Downers Grove, IL 60515  
www.corporateconstructionservices.com  
630-271-0500 PH

**Frederick Quinn Corporation**

Jack Hayes  
jhayes@fquinncorp.com  
103 S. Church St.  
Addison, IL 60101-3746  
www.fquinncorp.com  
630-628-8500 PH

**Henry Bros. Co.**

Marc Deneau  
mdeneau@henrybros.com  
9821 S. 78th Ave.  
Hickory Hills, IL 60457-2324  
www.henrybros.com  
708-430-5400 PH

**Lamp Incorporated**

Ian Lamp  
ilamp@lampinc.net  
460 N. Grove Ave.  
Elgin, IL 60120  
www.lampinc.net  
847-741-7220 PH

**V3 Companies**

Greg Wolterstorff  
gwolterstorff@v3co.com  
7325 Janes Ave.  
Woodridge, IL 60517  
www.v3co.com  
630-729-6334 PH

**CONSULTANTS**

**Anthony Roofing - Tecta America**

Corey Fratus  
cfratus@tectaaamerica.com  
2555 White Oak Circle  
Aurora, IL 60502  
www.tectaaamerica.com  
630-515-5554 PH

**aQity Research & Insights, Inc.**

Jeff Andreasen  
j.andreasen@aqityresearch.com  
820 Davis St., Suite 502  
Evanston, IL 60201  
www.aqityresearch.com  
847-424-4171 PH

## IAPD CORPORATE/ASSOCIATE MEMBERS

### Landscapes Golf Management

Mark Mattingly  
mmattingly@landscapesgolf.com  
1201 Aries Dr.  
Lincoln, NE 68512  
www.landscapesunlimited.com/index.php4  
024236653

### ENERGY MANAGEMENT

#### Ameren Illinois

Carol Kulek  
CKulek@ameren.com  
1110 Memory Ln.  
Springfield, IL 62707  
www.amerenillinoisavings.com  
217-741-2489 PH

#### ComEd Energy Efficiency Program

Chris McCabe  
cmccabe@resource-innovations.com  
2011 Swift Drive  
Oak Brook, IL 60523-1580  
www.ComEd.com/PublicSectorEE

#### Nicor Gas Energy Efficiency Program

Melissa Ruvalcaba  
mruvalca@southernco.com  
1844 Ferry Rd.  
Naperville, IL 60563  
www.southernco.com  
630-388-3844 PH

#### Seven Utility Management Consultants

Dale Snyder  
dsnyder@sevenutility.com  
7704 Oakridge Rd.  
North Little Rock, AR 72116  
www.sevenutility.com  
501-835-3142 PH

#### Trajectory Energy Partners, LLC

Hal Sprague  
hal@trajectoryenergy.com  
PO Box 310  
Highland Park, IL 60035  
www.trajectoryenergy.com  
847-204-4170 PH

#### Trane

Thomas Huberty  
thomas.huberty@tranetechnologies.com  
775 Vandalia St.  
St. Paul, MN 55114  
www.trane.com  
651-468-2742 PH

### EXERCISE EQUIPMENT

#### Matrix Fitness

Kevin Kingston  
kevin.kingston@matrixfitness.com  
1600 Landmark Drive  
Cottage Grove, WI 53527  
www.matrixfitness.com  
773-919-7370 PH

### FINANCE

#### Mesirow Financial, Inc.

Todd Krzyskowski  
tkrzyskowski@mesirofinancial.com  
353 N. Clark St.  
Chicago, IL 60654  
www.mesirofinancial.com  
312-595-7842 PH

#### Speer Financial, Inc.

Aaron Gold  
agold@speerfinancial.com  
230 W. Monroe  
Chicago, IL 60606  
www.speerfinancial.com  
312-780-2280 PH

### INSURANCE

#### Illinois Parks Association Risk Services (IPARKS)

Ryan Pnakovich  
rpnakovich@bfggroup.com   
315 S. Kalamazoo Mall  
Kalamazoo, MI 49007-4806  
www.iparks.org  
800-692-9522 PH

#### Park District Risk Management Agency (PDRMA)

Brett Davis  
bdavis@pdrma.org   
2033 Burlington Ave.  
Lisle, IL 60532-1646  
www.pdrma.org  
630-769-0332 PH

### INVESTMENTS

#### PFM Asset Management

Michelle Binns  
binns@pfmam.com  
190 S La Salle, Suite 2000  
Chicago, IL 60603-3542  
www.pfm.com  
312-523-2428 PH

#### PMA Financial Network, LLC

Courtney Soesbe  
csoesbe@pmanetwork.com  
2135 City Gate Ln., 7th Fl  
Naperville, IL 60563  
www.pmanetwork.com  
630-657-6421 PH

### LAND PRESERVATION

#### Openlands

Gerald Adelmann  
jdigiovanna@openlands.org  
25 E. Washington St., Suite 1650  
Chicago, IL 60602  
www.openlands.org  
312-863-6250 PH

### LANDSCAPE ARCHITECTS

#### Hitchcock Design Group

Bill Inman  
binman@hitchcockdesigngroup.com  
22 E. Chicago Ave., Suite 200A  
Naperville, IL 60611-2009  
www.hitchcockdesigngroup.com  
630-961-1787 PH

#### JSD Professional Services, Inc.

Lori Vierow  
lori.vierow@jsdinc.com  
1400 East Touhy Avenue, Suite 215  
Des Plaines, IL 60018-3339  
www.jsdinc.com  
312-644-3379 PH

### LANDSCAPE SERVICES/SUPPLIES

#### Balanced Environments, Inc.

Norm Kleber  
nkleber@balancedenvironmentsinc.com  
17950 W. IL Rte 173  
Old Mill Creek, IL 60083  
www.balancedenvironmentsinc.com  
847-693-9348 PH

#### McGinty Bros., Inc. Lawn & Tree Care

Brian McGinty  
brian@mcgintybros.com  
3744 E Cuba Rd.  
Long Grove, IL 60047  
www.mcgintybros.com  
847-438-5161 PH

**LIGHTING**

**Musco Sports Lighting**  
David Miller  
david.miller@musco.com  
100 1st Ave. W.  
Oskaloosa, IA 52577  
www.musco.com  
877-388-7652 PH

**MAINTENANCE PRODUCTS**

**Midwest Mechanical**  
Abigail Hengesbach  
abbey.hengesbach@midwestmech.com  
801 Parkview Blvd.  
Lombard, IL 60148  
224-500-9086 PH

**PARKS & PLAYGROUNDS**

**Cunningham Recreation**  
Michele Breakfield  
michele@cunninghamrec.com   
2020 Calamos Court, Ste 200  
Naperville, IL 60563  
www.cunninghamrec.com  
800-438-2780 PH

**Imagine Nation LLC**  
Michele Kuhl  
manmichele@imagineparks.com  
1827 Stratford Ave.  
Westchester, IL 60154-4249  
www.imagineparks.com  
773-330-0983 PH

**Kompan**  
Ken Dobyns  
kendob@kompan.com  
2 Squantz View Dr.  
New Fairfield, CT 06812  
www.kompan.com  
646-596-1052 PH

**NuToys Leisure Products**  
Sheilah Wasielewski  
sheilahw@nutoys4fun.com  
915 Hillgrove  
LaGrange, IL 60525  
www.nutoys4fun.com  
708-579-9055 PH

**SAFETY PROGRAMS**

**Illinois Public Risk Fund**  
Robert Buhs  
rbuhs@iprf.com  
7851 W. 185th St., Suite 101  
Tinley Park, IL 60477-6296  
www.iprf.com  
708-429-6300 PH

**SHELTERS**

**Norwalk Concrete Industries**  
Dalton Vaughan  
dvaughan@nciprecast.com  
80 Commerce Dr.  
Norwalk, OH 44857  
www.nciprecast.com  
800-733-3624 PH

**SITE FURNISHINGS**

**Flood's Royal Flush Inc.**  
Mimi Lomeli  
customer.care@floodsroyalflush.com  
PO Box 303  
Wasco, IL 60183-0303  
888-358-7404 PH

**SURFACING MATERIALS**

**ForeverLawn Chicago**  
Justin Lettenberger  
justin@chicago.foreverlawn.com  
3438 Colony Bay Dr.  
Rockford, IL 61109-2560  
www.foreverlawnchicago.com  
779-368-0251 PH


**TECHNOLOGY**

**CivicPlus**  
Jessica Kehler  
keehler@civicplus.com  
302 S. 4th Street, Suite 500  
Manhattan, KS 66502  
www.civicrec.com  
785-560-2063 PH

**Links Technology Solutions, Inc.**  
James Burke  
jburke@linkstechnology.com  
440 E. State Parkway, Suite 220  
Schaumburg, IL 60173  
www.linkstechnology.com  
847-252-7285 PH

**Smart Field Forms**  
Lee Forkenbrock  
lee@smartfieldforms.com  
3550 Hobson Rd., Suite 403  
Woodridge, IL 60517  
www.smartfieldforms.com  
312-588-7200 PH

**TELECOMMUNICATIONS**

**Call One**   
Camryn Filetti  
cfiletti@callone.com  
225 W. Wacker Dr., 8th Fl  
Chicago, IL 60606-1260  
www.callone.com  
312-496-6693 PH

**TRANSPORTATION**

**Best Bus Sales**  
Rob Zimmerman  
accounting@BestBusSales.com  
1216 Rand Rd.  
Des Plaines, IL 60016-3403  
www.bestbussales.com  
847-297-3177 PH

**Monroe Truck Equipment**  
Rosie Katzenberger  
rkatzenberger@monroetruck.com  
1051 W. 7th St.  
Monroe, WI 53566  
www.monroetruck.com  
608-329-8112 PH

**VIDEOGRAPHY**

**Jaffe, Inc.**  
Greg Bizzaro  
greg@jaffeinc.com  
1701 Quincy Ave., Suite 2  
Naperville, IL 60540-6689  
www.jaffeinc.com  
630-730-3777 PH

**WATER RECREATION**

**Commercial Recreation Specialists**  
Ron Romans  
info@crs4rec.com  
807 Liberty Dr., Suite 101  
Verona, WI 53593-9160  
www.crs4rec.com  
877-896-8442 PH

**WEB DEVELOPMENT**

**McDaniels Marketing**  
Randall McDaniels  
rmdaniels@mcdmarketing.com  
11 Olt Ave.  
Pekin, IL 61554  
mcdanielsmarketing.com  
309-346-4230 PH

Please contact Alan Howard at [ahoward@ilparks.org](mailto:ahoward@ilparks.org) for updates or changes to your corporate member listing.



# ENVIRONMENTS DESIGNED FOR ACTIVE COMMUNITIES



- Facility Condition Assessment
- Comprehensive Planning
- Design of New Construction, Additions, & Remodeling
- Interior Design
- Space Planning
- Green & Sustainable Design



**DLA**  
Ltd.  
ARCHITECTS

[www.dla-ltd.com](http://www.dla-ltd.com)

form follows  
learning





## IPRF is the Leader in Workers' Compensation Coverage

***Since our inception in 1985, the Illinois Public Risk Fund has invited public entities and government agencies to examine our outstanding record for cost-effective workers' compensation coverage. Today, over 700 risk managers rely on IPRF for:***

- 24/7/365 Claim Reporting
- In-house Nurse Case Management
- Aggressive subrogation program which will include members out of pocket expenses.
- Loss Control training and support that includes an extensive library of online training courses, simulator training and sample safety guides.
- IPRF members can select their own defense counsel subject to IPRF's litigation management process and approval.
- Dedicated Claims Team
- Prescription Drug Programs

# IPRA COMMERCIAL MEMBERS

## AQUATICS

### **AQUA PURE ENTERPRISES, LLC.**

Deborah Todnerv  
1404 Joliet Rd Ste A  
Romeoville, IL 60446  
apei@aquapure-il.com  
630-771-1310 PH  
aquapure-il.com

### **AQUATIC COUNCIL, LLC**

Timothy Auerhahn, CPOI  
78 Lyndale Dr  
Rochester, NY 14624  
tim@aquaticcouncil.com  
585-415-6926 PH  
aquaticcouncil.com

### **BURBACH AQUATICS**

Roger Schamberger  
5974 Highway 80 S.  
Platteville, WI 53818  
baae@centurytel.net  
608-348-3262 PH  
burbachaquatics.com

### **JEFF ELLIS AND ASSOCIATES, INC.**

Joe Stefanyak  
PO Box 2160  
Windermere, FL 34786  
joe.stefanyak@jellis.com  
407-401-7120 PH  
jellis.com

### **JUST IN TIME POOL & SPA**

Michael Butkovich  
148 Eisenhower Lane N.  
Lombard, IL 60148  
justintimepool@yahoo.com  
312-622-2223 PH

### **LINCOLN AQUATICS**

Charlie Luecker  
2051 Commerce Ave  
Concord, CA 94520-4950  
cs@lincolnaquatics.com  
800-223-5450 PH  
lincolnaquatics.com

### **SPEAR CORPORATION**

Brian Spear  
12966 N County Rd 50 W  
Roachdale, IN 46172-9538  
bspear@spearcorp.com  
765-522-1126 PH  
spearcorp.com

### **VORTEX AQUATIC STRUCTURES INTERNATIONAL**

Scott Stefanc  
11024 Bailey Rd, Ste C  
Cornelius, NC, 28031  
sstefanc@vortex-intl.com  
877-586-7839 PH  
vortex-intl.com

## BUILDING & CONSTRUCTION

### **BID EVOLUTION**

Steve Kulovits  
1905 Sequoia Dr  
Ste 201  
Aurora, IL 60506  
stevek@bidevolution.com  
630-450-8360 PH  
bidevolution.com

### **FREDERICK QUINN CORP**

Jack Hayes  
103 S. Church St  
Addison, IL 60101  
jhayes@fquinncorp.com  
630-628-8500 PH  
fquinncorp.com

### **INTEGRAL CONSTRUCTION INC.**

Christopher Osinski  
320 Rocbaar Dr  
Romeoville, IL 60446  
cosinski@buildintegral.com  
844-317-7403 PH

### **LAMP INCORPORATED**

Ian Lamp  
460 N. Grove Ave  
Elgin, IL 60120  
ilamp@lampinc.net  
847-741-7220 (305) PH  
lampinc.net

### **BYRNE & JONES CONSTRUCTION**

Joseph Schuit  
13940 Saint Charles Rock Rd  
Bridgeton, MO 63044-3826  
jschuit@byrneandjones.com  
314-619-3326 PH  
byrneandjones.com

## COMMUNITY ASSOCIATION

### **APPLE CANYON LAKE PROPERTY OWNERS ASSOCIATION**

Ashlee Miller  
14A157 Canyon Club Dr  
Apple River, IL 61001-9576  
Ashlee.Miller@applecanyonlake.org  
815-492-2238 PH  
applecanyonlake.org

## COOPERATIVE PURCHASING

### **SOURCEWELL**

Jon Henke  
202 12th St NE  
P.O. Box 219  
Staples, MN 56479  
Jon.henke@sourcewell-mn.gov  
218-541-5102 PH  
sourcewell-mn.gov

## **TIPS**

Chandie Randle  
4845 US Highway 271 N  
Pittsburg, TX 75686-4303  
chandie.randle@tips-usa.com  
903-575-2608 PH  
tips-usa.com

## ENERGY MANAGEMENT

### **AMEREN**

Carol Kulek  
P.O. box 5098  
Peoria, IL 61601  
CKulek@ameren.com  
217-741-2489 PH  
AmerenIllinoisSavings.com

### **COMED**

Amy Populorum  
2011 Swift Dr  
Oak Brook, IL 60523-1580  
Amy.Populorum@ComEd.com  
630-891-7430 PH  
comed.com

### **ONSITE UTILITY SERVICES CAPITAL, LLC**

Fritz Kreiss  
5072 State Rd 50  
Delavan, WI 53115-4200  
info@ouscapital.com  
262-248-0926 PH  
ausenergy.com

### **TRAJECTORY ENERGY PARTNERS**

Hal Sprague  
PO Box 310  
Highland Park, IL 60035  
hal@trajectoryenergy.com  
847-204-4170 PH  
trajectoryenergy.com

### **VEREGY**

Danielle Melone  
17W635 Butterfield Rd, Ste 315  
Oakbrook Terrace, IL 60181-4004  
dmelone@veregy.com  
300-200-5204 PH  
veregy.com

## ENTERTAINMENT & EVENT SERVICES

### **BASS/SCHULER ENTERTAINMENT**

Mia Bass  
4055 W Peterson Ave, Ste 206  
Chicago, IL 60646-6183  
info@bass-schuler.com  
773-481-2600 PH  
bass-schuler.com

**BRIAN WISMER ENTERTAINMENT**

Brian Wismer  
3480 Bayberry Dr  
Northbrook, IL 60062-2217  
brian@funwizz.com  
847-414-9395 PH  
funwizz.com

**LAKE GENEVA CRUISE LINE**

Susan Schindler  
812 Wrigley Dr, P.O. Box 68  
Lake Geneva, WI 53147  
susan@glcl.net  
262-248-5642 PH  
cruiselakegeneva.com

**PYROTECNICO**

Jonathan Gesse  
P.O. Box 302  
Kingsbury, IN 46345  
Jgesse@pyrotecnico.com  
219-393-5522 PH  
pyrotecnico.com

**THE FORGE ADVENTURE PARKS**

Jeremie Bacon  
340 River St  
Lemont, IL 60439-7227  
info@theforgeparks.com  
630-326-3301 PH  
theforgeparks.com

**FINANCE**

**5/3 FIFTH THIRD BANK**

Sean Patrick Durkin  
1151 State St  
Lemont, IL 60439-4200  
Sean.Durkin@53.com  
630-297-5987 PH  
53.com

**BMO HARRIS BANK**

Robert Santore  
111 W Monroe St 5E  
Chicago, IL 60603  
robert.santore@bmo.com  
bmo.com

**LAUTERBACH & AMEN, LLP**

Ron Amen  
668 N. River Rd  
Naperville, IL 60563  
ramen@lauterbachamen.com  
630-393-1483 PH  
lauterbachamen.com

**SPEER FINANCIAL**

Aaron Gold  
230 W. Monroe St, Ste 2630  
Chicago, IL 60606  
agold@speerfinancial.com  
312-780-2280 PH  
speerfinancial.com

**STIFEL**

Tom Reedy  
70 West Madison St  
Ste 2400  
Chicago, IL 60602  
reedyt@stifel.com  
312-423-8245 PH  
stifel.com

**WINTRUST FINANCIAL CORPORATION**

Aimee Briles  
9700 W. Higgins Rd  
4<sup>th</sup> Floor  
Rosemont, IL 60018  
abriles@wintrust.com  
630-560-2120 PH  
wintrust.com

**GOLF**

**SWING TIME GOLF, LLC**

Jeff Zimmerman  
5819 Nieman Rd  
Shawnee, KS 66203-2855  
jeffz@swingtime.golf  
913-850-3372 PH  
swingtime.golf

**HEALTH AND WELLNESS**

**NATIONAL FITNESS CAMPAIGN**

Trent Matthias  
415 Jackson St  
San Francisco, CA 94111  
trent@nfchq.com  
415-702-4919 ext. 101 PH  
nationalfitnesscampaign.com

**LANDSCAPE SERVICES/SUPPLIES**

**CENTRAL LIFE SCIENCES**

John Neberz  
1501 E. Woodfield Rd  
Ste 200W  
Schaumburg, IL 60173  
jneberz@central.com  
847-330-5385 PH  
centralmosquitocontrol.com

**CONFLUENCE**

Craig Soncrant  
307 N. Michigan Ave., #601  
Chicago, IL 60601  
csoncrant@thinkconfluence.com  
312-663-5494 PH  
thinkconfluence.com

**GLI, INC.**

George Petecki  
1410 Mills Rd  
Joliet, IL 60433  
bridget@georgeslandscaping.com  
815-774-0350 PH  
georgeslandscaping.com

**GREEN-UP**

Bernard Schroeder  
23940 Andrew Rd  
Plainfield, IL 60585  
sandy@green-up.com  
815-372-3000 PH  
green-up.com

**THE DAVEY TREE EXPERT COMPANY**

Mandy McCauley  
1375 E Woodfield Rd, Ste 204  
Schaumburg, IL 60173-5424  
mandy.mccauley@davey.com  
630-422-1870 PH  
davey.com

**THE MULCH CENTER**

Jim Seckelmann  
21457 N. Milwaukee Ave  
Deerfield, IL 60015  
jim@mulchcenter.com  
847-459-7200 PH  
mulchcenter.com

**LIGHTING**

**MUSCO SPORTS LIGHTING**

Nick Mauer  
100 1st Ave W  
Oskaloosa, IA 52577-3244  
nick.mauer@musco.com  
800-825-6030 PH  
musco.com

**MARKETING & COMMUNICATIONS**

**EXCEL AERIAL IMAGES, LLC**

Eric Lee Wilson, CPRP  
1137 E. Woodrow Ave  
Lombard, IL 60148  
ericlee@excelaerialimagesllc.com  
224-775-4623 PH  
excelaerialimages.com

# IPRA COMMERCIAL MEMBERS

## MEDIA

### **ISSUU**

Nathan Burns  
131 Lytton Ave  
Palo Alto, CA 94301-1045  
nathan.burns@issuu.com  
844-477-8800 PH  
www.issuu.com



## NATIVE AREAS MANAGEMENT

### **BEDROCK EARTHSCAPES, LLC**

William Bedrossian  
1501 E Harrison Ave  
Wheaton, IL 60187-4424  
Bill@bedrockearthscapes.com  
630-461-1159 PH  
bedrockearthscapes.com

## PARKS & PLAYGROUNDS

### **AMERICANA OUTDOORS**

Kevin Cook  
2 Industrial Dr  
Salem, IL 62881  
kevin@americana.com  
866-779-1651 PH  
americana.com

### **CUNNINGHAM RECREATION**

Michele Breakfield  
2020 Calamos Court, Ste 200  
Naperville, IL 60563  
michele@cunninghamrec.com  
800-438-2780 PH  
cunninghamrec.com

### **DISCOUNT PLAYGROUND SUPPLY, INC**

PO Box 278  
Simpsonville, SC 29681-0278  
sales@discountplaygroundsupply.com  
888-760-2499  
discountplaygroundsupply.com

### **FIELDTURF USA, INC.**

Jonathan Huard  
175 N. Industrial Blvd NE  
Calhoun, GA 30701  
jonathan.huard@fieldturf.com  
630-474-9817 PH  
fieldturf.com

### **PLAY & PARK STRUCTURES**

Patrick Puebla  
3602 - 37th Ave., #4  
Moline, IL 61265  
ppuebla@playandpark.com  
573-631-1968 PH  
playandpark.com

### **PLAY ILLINOIS**

Michael Maloney  
310 N Grant St  
Westmont, IL 60559-1505  
mike@playil.com  
630-514-5405 PH  
playil.com

## PLANNING & DESIGN

### **FEHR GRAHAM**

Pat Kelsey  
230 Woodlawn Ave  
Aurora, IL 60506-5194  
pkelsey@fehrgraham.com  
630-423-0482 PH  
fehrgraham.com

### **DEWBERRY ARCHITECTS INC.**

Daniel Atilano  
132 N York St  
Elmhurst, IL 60126-3079  
datilano@dewberry.com  
847-841-0571 PH  
dewberry.com

### **DLA ARCHITECTS, LTD.**

Lou Noto  
2 Pierce Pl., Ste 1300  
Itasca, IL 60143-3155  
l.noto@dla-ltd.com  
847-742-4063 PH  
dla-ltd.com

### **FGM ARCHITECTS**

John Dzarnowski  
1211 W. 22nd St  
Ste 705  
Oakbrook, IL 60523  
johnd@fgmarchitects.com  
630-574-8300 PH  
fgmarchitects.com

### **GEWALT HAMILTON ASSOCIATES**

Michael Shrake  
625 Forest Edge Dr  
Vernon Hills, IL 60061  
mshrake@gha-engineers.com  
847-478-9700 PH  
gha-engineers.com

### **HITCHCOCK DESIGN GROUP**

Bill Inman  
225 W. Jefferson Ave  
Naperville, IL 60540  
binman@hitchcockdesigngroup.com  
630-961-1787 PH  
hitchcockdesigngroup.com

### **INSPEC, INC**

Dave Foler  
8618 W. Catalpa, Ste 1109-1110  
Chicago, IL 60656  
dfoler@inspec.com  
773-892-2771 PH  
inspec.com

### **JSD PROFESSIONAL SERVICES, INC.**

Lori Vierow  
1400 E Touhy Ave  
Ste 215  
Des Plaines, IL 60018-3339  
lori.vierow@jsdinc.com  
630-362-6681 PH  
jsdinc.com

### **MSA PROFESSIONAL SERVICES, INC**

Deb Benesh  
1230 South Blvd.  
Baraboo, WI 53913  
dbenesh@msa-ps.com  
563-424-3691 PH  
msa-ps.com

### **PLANNING RESOURCES INC.**

Darrell Garrison  
913 Parkview Blvd  
Lombard, IL 60148-3267  
dgarrison@planres.com  
630-668-3788 PH  
planres.com

### **SMITHGROUP**

Brett Weidl  
35 E. Wacker Dr  
Ste 900  
Chicago, IL 60601  
brett.weidl@smithgroup.com  
312-641-0770 PH  
www.smithgroup.com

### **THE LARSON EQUIPMENT AND FURNITURE COMPANY**

Dave Dillon  
1000 E. State Parkway, Unit F  
Schaumburg, IL 60173  
ddillon@larsoncompany.com  
847-705-0460 PH  
larsoncompany.com

### **WIGHT & COMPANY**

Robert Ijams  
2500 N. Frontage Rd  
Darien, IL 60561  
rijams@wightco.com  
630-739-6644 PH  
wightco.com

**WILLIAMS ARCHITECTS**

Karen T. Lellios  
500 Park Blvd.  
Ste 800  
Itasca, IL 60143  
ktlellios@williams-architects.com  
630-221-1212 PH  
williams-architects.com

**WT GROUP**

Jaclyn Triphahn  
2675 Pratum Ave  
Hoffman Estates, IL 60192  
Jaclyn.Triphahn@wtengineering.com  
224-293-6333 PH  
wtengineering.com

**PROFESSIONAL SERVICES**

**ANCEL GLINK DIAMOND BUSH  
DICIANNI & KRAFTHEFER P.C.**

Robert Bush  
140 S. Dearborn St  
6th Floor  
Chicago, IL 60603  
rbush@ancelglink.com  
312-604-9105 PH  
ancelglink.com

**BERRYDUNN**

Dannielle Wilson  
100 Middle St  
4th Floor East Tower  
Portland, ME 04101  
DWilson@BerryDunn.com  
207-842-8121 PH  
berrydunn.com

**GREG PETRY CONSULTING**

Greg Petry, CPRE  
474 Glendenning Place  
Waukegan, IL 60087  
greg@gregpetryconsulting.com  
847-287-4721 PH

**HR SOURCE**

Christopher Schneider  
3025 Highland Parkway  
Ste 225  
Downers Grove, IL 60515  
cschneider@hrsource.org  
630-963-7600 x232 PH

**ILLINOIS PUBLIC RISK FUND**

Robert Buhs  
7851 W. 185th St  
Ste 101  
Tinley Park, IL 60477  
rbuhs@iprf.com  
708-429-6300 PH  
iprf.com

**PDRMA**

Brett Davis  
2033 Burlington Ave  
Lisle, IL 60532  
bdavis@pdrma.org  
630-769-0332 PH  
pdrma.org

**RECREATION**

**CANLAN SPORTS**

Hileema Mitchell  
989 Murray Ross Parkway  
Toronto, ON M3J 3M4  
CANADA  
(416) 661-5207 PH  
hmitchell@canlansports.com



**CHICAGO DISTRICT TENNIS  
ASSOCIATION**

Jill Siegel  
2027 W Division St #171  
Chicago, IL 60622  
info@chicagodistricttennis.com  
847-803-2382 PH

**SIGNAGE**

**IZONE IMAGING**

Brad Huckabay  
2526 Charter Oak Dr  
Ste 100  
Temple, TX 76502  
bhuckabay@izoneimaging.com  
888-464-9663 PH  
izoneimaging.com

**TERRABILT INC.**

Donald Meeker  
532 N State Rd  
Briarcliff Manor, NY 10510  
don@terrabilt.com  
914-341-1500 PH  
terrabilt.wolfenwicked.com

**SUPPLIES**

**FEDERAL SUPPLY USA**

Chad Read  
1171 S Northpoint Blvd.  
Waukegan, IL 60085-8216  
cread@federalsupply.com  
847-623-1310 PH  
federalsupply.com

**TECHNOLOGY SOLUTIONS**

**L6 TECHNOLOGY INC**

Ted Lemmy  
1S280 Summit Ave.  
Suite A3  
Oakbrook Terrace, IL 60181  
info@L6tech.com  
(630) 656-9191 PH



**CIVICREC**

Nick Glasgow  
302 S 4th St, Ste 500  
Manhattan, KS 66502-6410  
Nicholas.glasgow@civicplus.com  
785-370-7328 PH  
civicplus.com

**RAM COMMUNICATIONS INC.**

Rob McCoy  
2720 S River Rd, Ste 152  
Des Plaines, IL 60018-4111  
info@ramcomminc.com  
847-358-0917 PH  
ramcomminc.com

**TYLER TECHNOLOGIES, INC.**

Katie Caton  
5101 Tennyson Pkwy  
Plano, TX 75024-3525  
katie.caton@tylertech.com  
207-518-4745 PH  
tylertech.com

**VERMONT SYSTEMS, INC.**

David Wirtz  
12 Market Place  
Essex Junction, VT 05452  
davew@vermontsystems.com  
802-276-5447 PH  
vermontsystems.com

**VOYAGERNETZ**

Hanz Van Aardt  
333 N Randall Rd  
Ste 105  
Saint Charles, IL 60174-1561  
hello@voyagernetz.com  
312-889-8614 PH



**WEB DEVELOPMENT**

**A5 BRANDING & DIGITAL**

John Harris  
1 North La Salle St, 47th Floor  
Chicago, IL 60602  
jharris@a5inc.com  
708-227-5313 PH  
a5inc.com





# Partnerships Matter

It's always good to have a partner when it comes to investing — one you can count on in all types of challenging situations. Illinois Trust's investment philosophy is based on safety and preservation of principal so that our investment professionals can assist you in any investment climate. Want to learn more about partnering with us?

Call IPDLAF+ Class today at **800.731.6830** or visit our web site at **[www.IPDLAF.org](http://www.IPDLAF.org)**.

**Michelle Binns**

Senior Managing  
Consultant  
312.523.2428

**Jeff Schroeder**

Managing Director  
312.523.2423

**Amber Cannegieter**

Key Account Manager  
800.731.6830

Sponsored by: *Illinois Association of Park Districts* | *Illinois Park & Recreation Association*

*This information is for institutional investor use only, not for further distribution to retail investors, and does not represent an offer to sell or a solicitation of an offer to buy or sell any fund or other security. Investors should consider the Trust's investment objectives, risks, charges and expenses before investing in the Trust. This and other information about the Trust is available in the Trust's current Information Statements, which should be read carefully before investing. A copy of the Trust's Information Statement for the IIIT Class of the Illinois Portfolio and Illinois TERM may be obtained by calling 1-800-731-6870 or is available on the Trust's website at [www.iiit.us](http://www.iiit.us). A copy of the Information Statement for the IPDLAF+ Class and Illinois TERM may be obtained by calling 1-800-731-6830 or is available on its website at [www.ipdlaf.org](http://www.ipdlaf.org). While both the IIIT and IPDLAF+ Classes of the Illinois Portfolio seek to maintain a stable net asset value of \$1.00 per share and the Illinois TERM series seek to achieve a net asset value of \$1.00 per share at its stated maturity, it is possible to lose money investing in the Trust. An investment in the Trust is not insured or guaranteed by the Federal Deposit Insurance Corporation or any other government agency. Shares of the Trust are distributed by **PFM Fund Distributors, Inc.**, member Financial Industry Regulatory Authority (FINRA) ([www.finra.org](http://www.finra.org)) and Securities Investor Protection Corporation (SIPC) ([www.sipc.org](http://www.sipc.org)). PFM Fund Distributors, Inc. is a wholly owned subsidiary of PFM Asset Management LLC.*

# IAPD Energy Partner

YOUR ADVOCATE FOR REAL TIME COMPETITIVE OFFERS FROM LEADING SUPPLIERS

**VII**  
S E V E N

Utility Management Consultants, Ltd.

**IAPD**

Illinois Association of Park Districts

FREE NO OBLIGATION  
Executive Analysis for Your Facilities



Contact: Dale Snyder  
National Accounts Manager  
**(501) 835-3142**  
7704 Oakridge Road  
North Little Rock, AR 72116  
Email: [dsnyder@sevenutility.com](mailto:dsnyder@sevenutility.com)  
[ILparks.org/energy](http://ILparks.org/energy)

*"Seven Utility Management Consultants has greatly benefited our park district during these tough economic times. Our park district has realized substantial natural gas and electricity savings because of the services that Seven provides. Thank you for making this opportunity available to IAPD member agencies."*

*-Oakbrook Terrace  
Park District*